

S P E C I A L P R O J E C T S L T D

## Architectural LED Pro Series Tape LED Solutions

### COB SEAMLESS TAPE

Ghs Special Projects Ltd  
GHS House  
Manchester

+44 0161 737 7333

Email: [sales@ghsspecialprojects.com](mailto:sales@ghsspecialprojects.com)

Website: [www.ghsspecialprojects.com](http://www.ghsspecialprojects.com)



Mini-Size COB Strip

Ultra-slim design (3-5mm), saving space while offering bright illumination.



## Pro Series Ribbon Tape

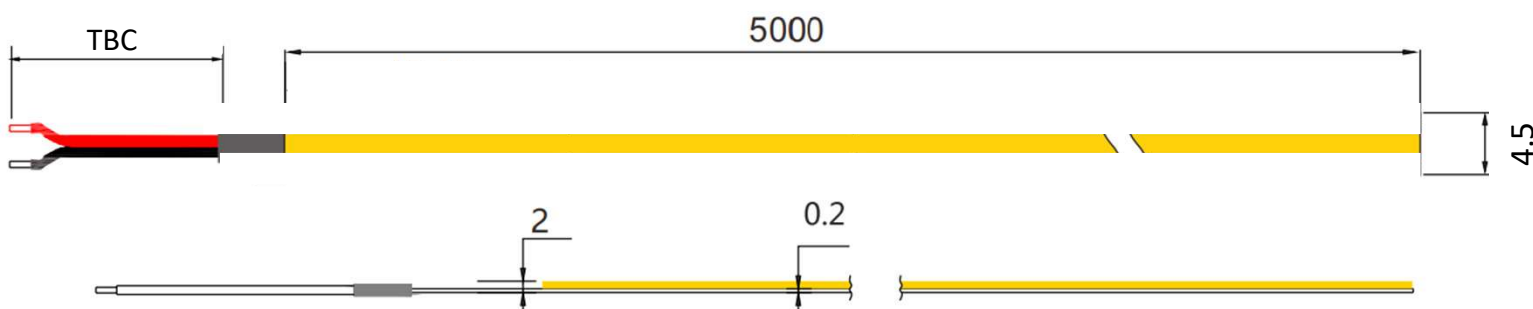
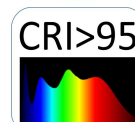
GHSCOBSC-2219-16-D4503 / 7.2W perMetre  
LED Seamless COB Micro Constant Voltage

This LED Pro Series Ribbon Tape series has been designed with new high efficiency seamless COB LED which provides high light performance and advanced durability protection. This energy efficient LED series provides ultra low energy consumption without losing light quality in required specific locations. . It is compatible with DMX, 0-10V, and DALI protocols, and works Seamlessly with professional controllers such as Rako, Lutron, Crestron, and many other dimmer systems.

Features: Single colour - 5M Length

⚙ Wattage	7.2Watt
⚙ Single board-circuit body	Seamless
⚙ Cable	2 Core
⚙ Control	Triac/0-10/DMX/KNX
⚙ Cutting points	mm
⚙ Constant Voltage PSU	24Volt
⚙ Beam angle	180°
⚙ IP option	IP20
⚙ Colour Rendering Index	CRI> 80Ra+
⚙ CCT:	(Kelvin) 2700K/3000K/4000K/5500K/6000K
⚙ Dimensions: (custom)	L: 5 Metre x 4.5mm x 2mm

\*Bespoke lengths available





## Pro Series Ribbon Tape

GHSSMCOB24276 / 9.6Watt perMetre

LED Tunable Seamless COB Constant Voltage

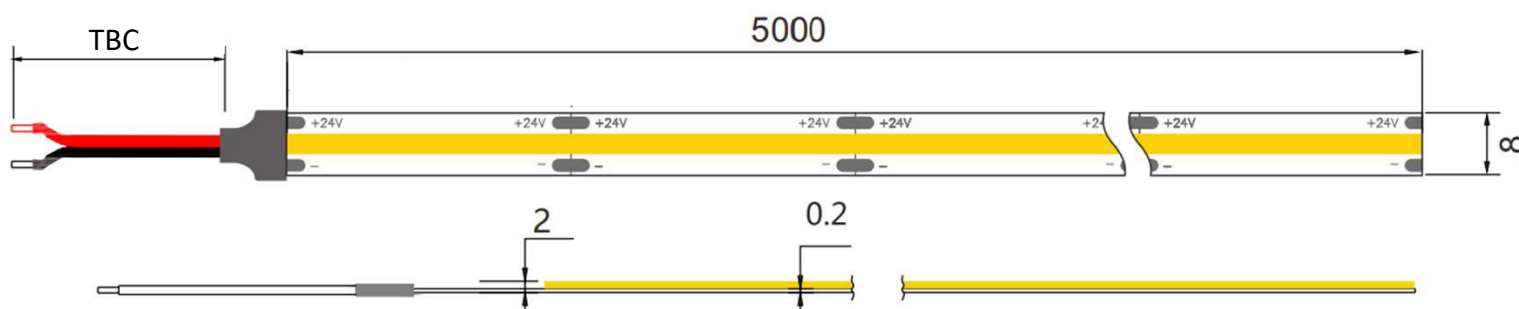
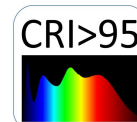
Tunable White Seamless Ribbon Strip offers versatility in providing the exact colour temperature light required for your project. This Dual LED solution is designed for seamless integration, providing dynamic control over colour temperature to suit any mood or setting.

. It is compatible with DMX, 0-10V, and DALI protocols, and works Seamlessly with professional controllers such as Rako, Lutron, Crestron, and many other dimmer systems.

Features: Tunable single CCT mix - 5M Length

⚙ Wattage	9.6Watt
⚙ Single board-circuit body	Seamless
⚙ Installation	Adhesive Tape
⚙ Cable	3 Core
⚙ Control	Triac/0-10/DMX/KNX
⚙ Cutting points	28mm
⚙ Constant Voltage PSU	24Volt
⚙ Beam angle	180°
⚙ IP option	IP20
⚙ Colour Rendering Index	CRI> 80Ra+
⚙ CCT:	(Kelvin) 2700K/3000K/4000K/5500K/6000K
⚙ Dimensions: (custom)	L: 5 Metre x 8mm x 2mm

\*Bespoke lengths available







## Pro Series Ribbon Tape

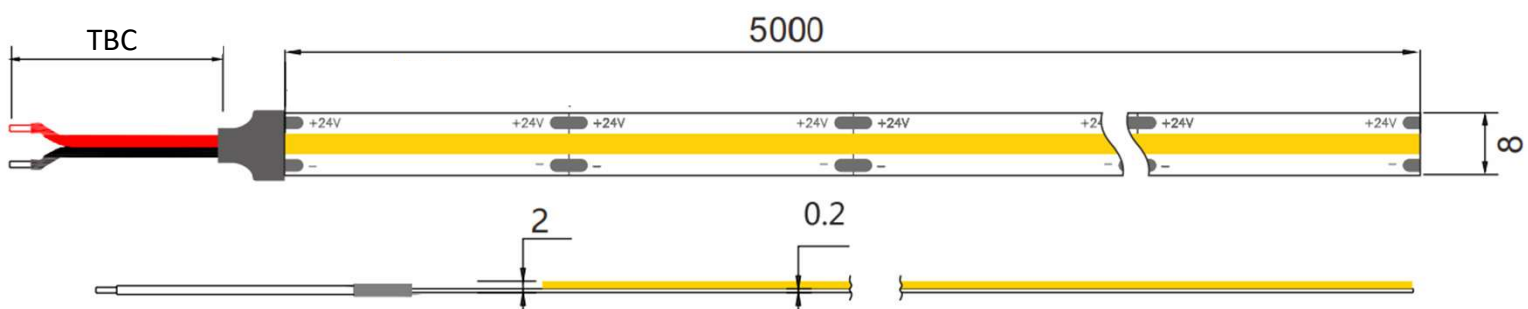
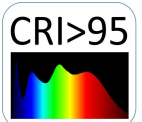
GHSSMCOB48024 / 10Watt perMetre

LED Seamless COB Constant Voltage

This LED Pro Series Ribbon Tape series has been designed with new high efficiency seamless COB LED which provides high light performance and advanced durability protection. This energy efficient LED series provides ultra low energy consumption without losing light quality in required specific locations. It is compatible with DMX, 0-10V, and DALI protocols, and works Seamlessly with professional controllers such as Rako, Lutron, Crestron, and many other dimmer systems.

### Features: Dimmable 5M Length

- ⚙ Wattage 10Watt
  - ⚙ Single board-circuit body Seamless
  - ⚙ Installation Adhesive Tape
  - ⚙ Cable 2 Core
  - ⚙ Control Triac/0-10/DMX/KNX
  - ⚙ Cutting points 28mm
  - ⚙ Constant Voltage PSU 24Volt
  - ⚙ Beam angle 180°
  - ⚙ IP option IP20
  - ⚙ Colour Rendering Index CRI> 80Ra+
  - ⚙ CCT: (Kelvin) 2700K/3000K/4000K/5500K/6000K  
Red/green/blue
  - ⚙ Dimensions: (custom) L: 5 Metre x 8mm x 2mm
- \*Bespoke lengths available





## Pro Series Ribbon Tape

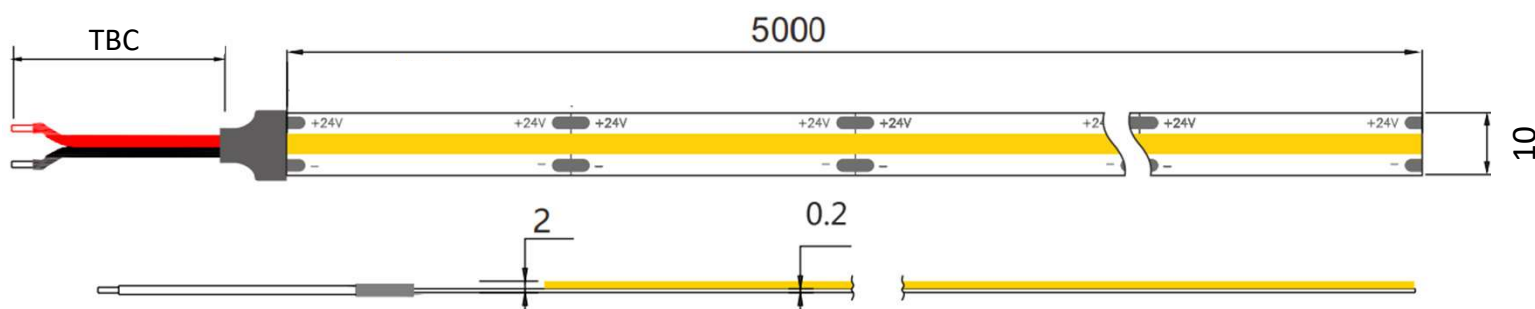
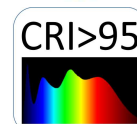
GHSSMCOB1 56666 / 12Watt perMetre  
LED Seamless COB Constant Voltage

This LED Pro Series Ribbon Tape series has been designed with new high efficiency seamless COB LED which provides high light performance and advanced durability protection. This energy efficient LED series provides ultra low energy consumption without losing light quality in required specific locations. . It is compatible with DMX, 0–10V, and DALI protocols, and works Seamlessly with professional controllers such as Rako, Lutron, Crestron, and many other dimmer systems.

### Features: Dimmable 5M Length

⚙ Wattage	12Watt
⚙ Single board-circuit body	Seamless
⚙ Installation	Adhesive Tape
⚙ Cable	2 Core
⚙ Control	Triac/0-10/DMX/KNX
⚙ Cutting points	45mm
⚙ Constant Voltage PSU	24Volt
⚙ Beam angle	180°
⚙ IP option	IP20
⚙ Colour Rendering Index	CRI> 80Ra+
⚙ CCT:	(Kelvin) 2700K/3000K/4000K/5500K/6000K Red/green/blue
⚙ Dimensions: (custom)	L: 5 Metre x 10mm x 2mm

\*Bespoke lengths available







## Pro Series Ribbon Tape

GHSSMCOB156745 / 11Watt perMetre

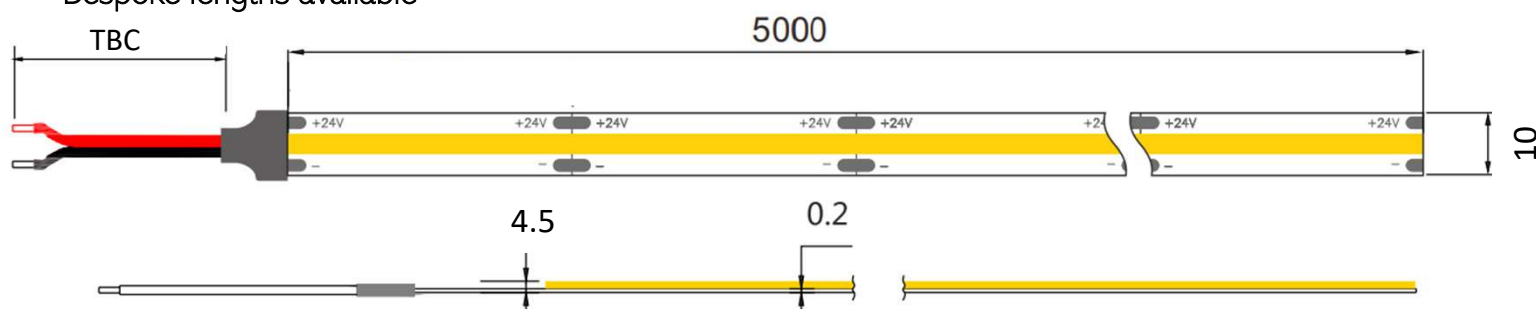
LED Seamless COB Constant Voltage

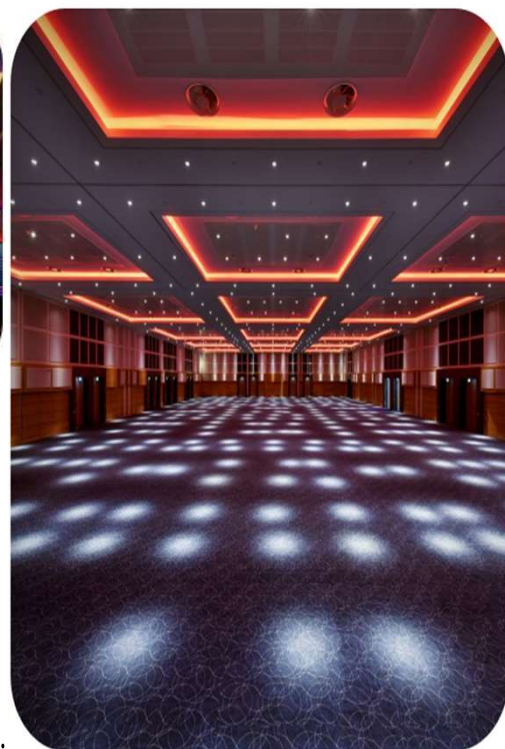
This LED Pro Series Ribbon Tape series has been designed with new high efficiency seamless COB LED which provides high light performance and advanced durability protection. This energy efficient LED series provides ultra low energy consumption without losing light quality in required specific locations. . It is compatible with DMX, 0-10V, and DALI protocols, and works Seamlessly with professional controllers such as Rako, Lutron, Crestron, and many other dimmer systems.

Features: Dimmable 5M Length

⚙ Wattage	11Watt
⚙ Single board-circuit body	Seamless
⚙ Installation	Adhesive Tape
⚙ Cable	2 Core
⚙ Control	Triac/0-10/DMX/KNX
⚙ Cutting points	50mm
⚙ Constant Voltage PSU	24Volt
⚙ Beam angle	180°
⚙ IP option	IP20
⚙ Colour Rendering Index	CRI> 80Ra+
⚙ CCT:	(Kelvin) 2700K/3000K/4000K/5500K/6000K Red/green/blue
⚙ Dimensions: (custom)	L: 5 Metre x 10mm x 4.5mm

\*Bespoke lengths available





# Pro Series Ribbon Tape

SMCOB24RGBGHS / 16.8Watt perMetre

LED RGB Seamless COB Constant Voltage

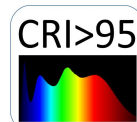
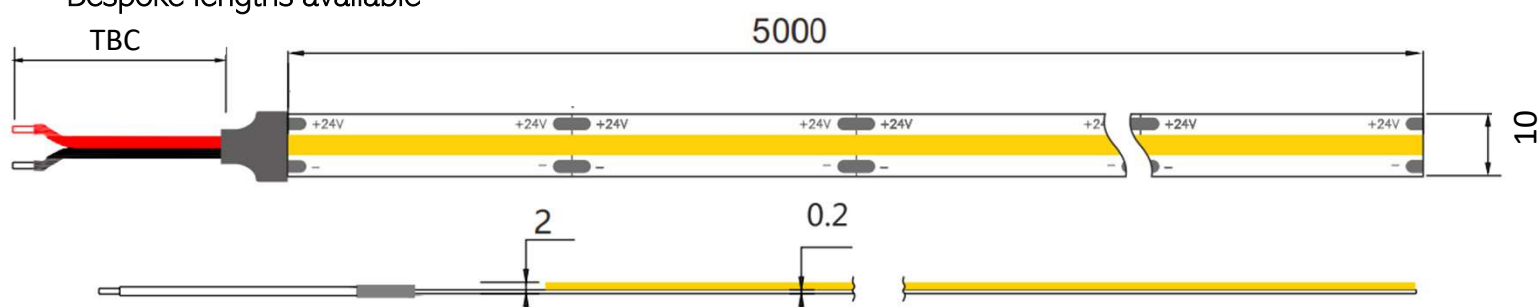
This LED Pro Series Ribbon Tape series has been designed with new high efficiency seamless COB LED which provides high light performance and advanced durability protection. This energy efficient LED series provides ultra low energy consumption without losing light quality in required specific locations. It is compatible with DMX, 0-10V, and DALI protocols, and works Seamlessly with professional controllers such as Rako, Lutron, Crestron, and many other systems.

Features: Colour Mix Dimmable 5M Length

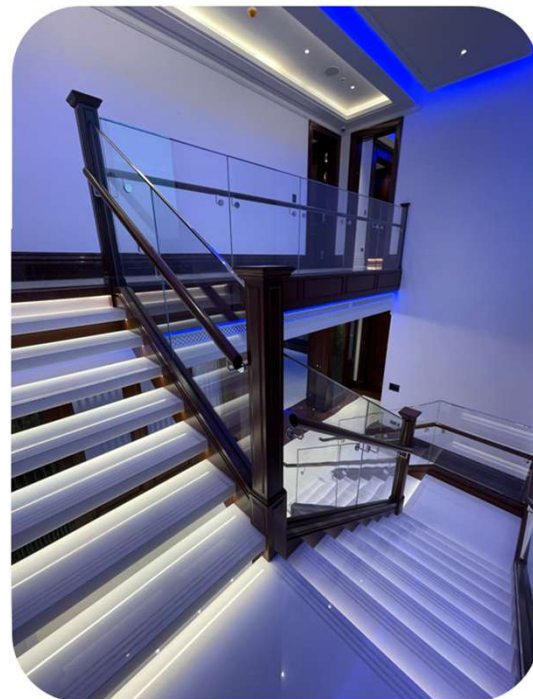
⚙ Wattage	16.8Watt
⚙ Single board-circuit body	Seamless
⚙ Installation	Adhesive Tape
⚙ Cable	4 Core
⚙ Control	Triac/0-10-DMX/KNX
⚙ Cutting points	50mm
⚙ Constant Voltage PSU	24Volt
⚙ Beam angle	180°
⚙ IP option	IP20
⚙ Colour Rendering Index	CRI> 80Ra+
⚙ CCT:	RGB
	Red/green/blue



⚙ Dimensions: (custom)	L: 5 Metre x 10mm x 2mm
*Bespoke lengths available	







## Pro Series Ribbon Tape

GHSF0603ASAT24/1 4W perMetre

LED Tunable Seamless COB Constant Voltage

Tunable White Seamless Ribbon Strip offers versatility in providing the exact colour temperature light required for your project. This Dual LED solution is designed for seamless integration, providing dynamic control over colour temperature to suit any mood or setting. It is compatible with DMX, 0–10V, and DALI protocols, and works Seamlessly with professional controllers such as Rako, Lutron, Crestron, and many other systems.

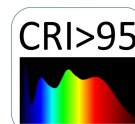
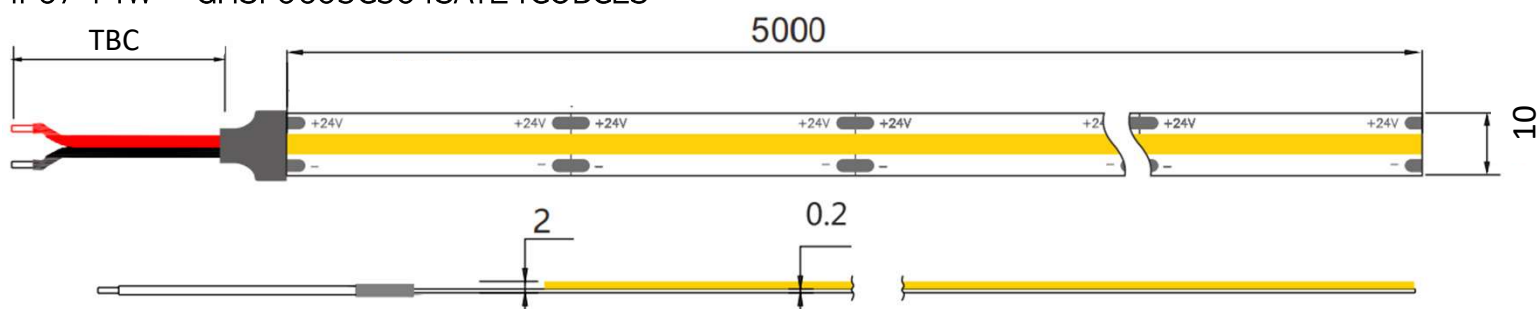
Features: Tunable single CCT mix - 5M Length

- ⚙ Wattage 14Watt
  - ⚙ Single board-circuit body Seamless
  - ⚙ Installation Adhesive Tape
  - ⚙ Cable 3 Core
  - ⚙ Control Triac/0-10/DMX/KNX
  - ⚙ Cutting points 26mm
  - ⚙ Constant Voltage PSU 24Volt
  - ⚙ Beam angle 180°
  - ⚙ IP option IP20
  - ⚙ Colour Rendering Index CRI> 80Ra+
  - ⚙ CCT: (Kelvin) 2700K/3000K/4000K/5500K/6000K
  - ⚙ Dimensions: (custom) L: 5 Metre x 10mm x 2mm
- \*Bespoke lengths available – (1~30M single length - Bespoke lengths available)

Ref:

IP20 14W = GHSF0603A304SAT24COBCES

IP67 14W = GHSF0603C304SAT24COBCES







## Pro Series Ribbon Tape

GHSF0603ASAT24/19W perMetre

LED Tunable Seamless COB Constant Voltage

Tunable White Seamless Ribbon Strip offers versatility in providing the exact colour temperature light required for your project. This Dual LED solution is designed for seamless integration, providing dynamic control over colour temperature to suit any mood or setting. It is compatible with DMX, 0-10V, and DALI protocols, and works seamlessly with professional controllers such as Rako, Lutron, Crestron, and many other systems.

Features: Tunable single CCT mix - 5M Length

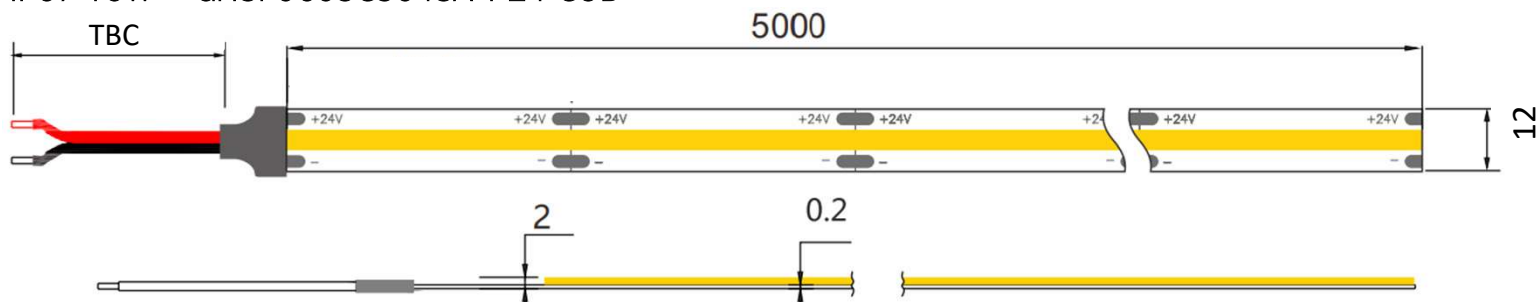
- ⚙ Wattage 19Watt
- ⚙ Single board-circuit body Seamless
- ⚙ Installation Adhesive Tape
- ⚙ Cable 3 Core
- ⚙ Control Triac/0-10/DMX/KNX
- ⚙ Cutting points 41mm
- ⚙ Constant Voltage PSU 24Volt
- ⚙ Beam angle 180°
- ⚙ IP option IP20
- ⚙ Colour Rendering Index CRI> 80Ra+
- ⚙ CCT: (Kelvin) 2700K/3000K/4000K/5500K/6000K
- ⚙ Dimensions: (custom) L: 5 Metre x 12mm x 2mm

\*Bespoke lengths available – (1~30M single length - Bespoke lengths available

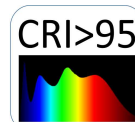
Ref:

IP20 19W = GHSF0603A504SAT24COB

IP67 19W = GHSF0603C504SA-T-24-COB



Ghs Special Projects Ltd, Manchester, +44 0161 737 7333



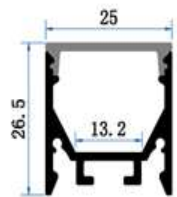
## LED Profile Extrusion

### LED Profile extrusions

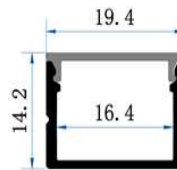
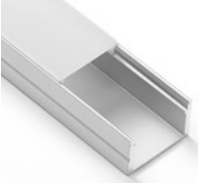
This is our high grade professional durable solution for installing LED ribbon. Each extrusion is made of T5 aircraft aluminium which enhances thermal performance and protects the ribbon from heat that is produced when the LED is at its brightest level, the included diffuser reduces the visibility of direct eye contact to the bare LED and minimizes any discomfort and LED spotting on reflective surfaces.

- ⚙ 2 Metre Lengths
- ⚙ Supplied with clips & end caps where applicable
- ⚙ Frosted diffuser

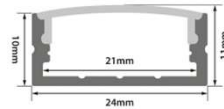
PC08 Surface Mount



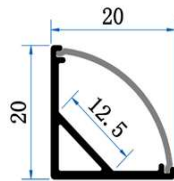
PC28 Surface Mount



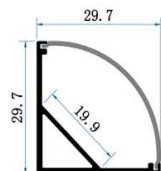
PC07 Surface Mount



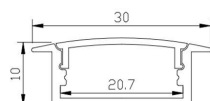
PC16 Corner Mount



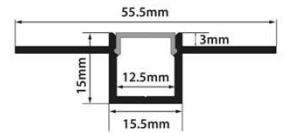
PC17 Corner Mount



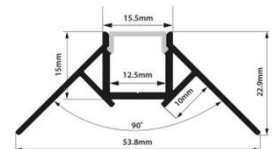
PC12 Recessed



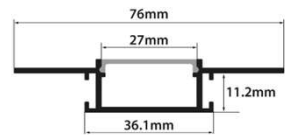
PC i1 Plaster In



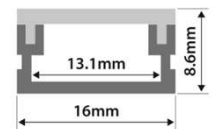
PC i2 Corner Plaster In



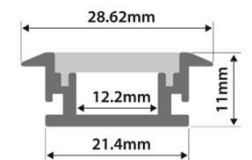
PC i3 Plaster In



PC26 Waterproof Surface Mount



PC27 Waterproof Recessed



PC19 Surface Mount

