

S P E C I A L P R O J E C T S L T D

Architectural LED Pro Series Tape LED Solutions

TAPE & PROFILE EXTRUSIONS

Ghs Special Projects Ltd
GHS House
Manchester

+44 0161 737 7333
Email: sales@ghsspecialprojects.com
Website: www.ghsspecialprojects.com





Pro Series Ribbon Tape

GHSF2216TSAH24 / 9W perMetre
LED Tunable SMD Constant Voltage

Tunable White Seamless Ribbon Strip offers versatility in providing the exact colour temperature light required for your project. This Dual LED solution is designed for seamless integration, providing dynamic control over colour temperature to suit any mood or setting. It is compatible with DMX, 0–10V, and DALI protocols, and works Seamlessly with professional controllers such as Rako, Lutron, Crestron, and many other systems.

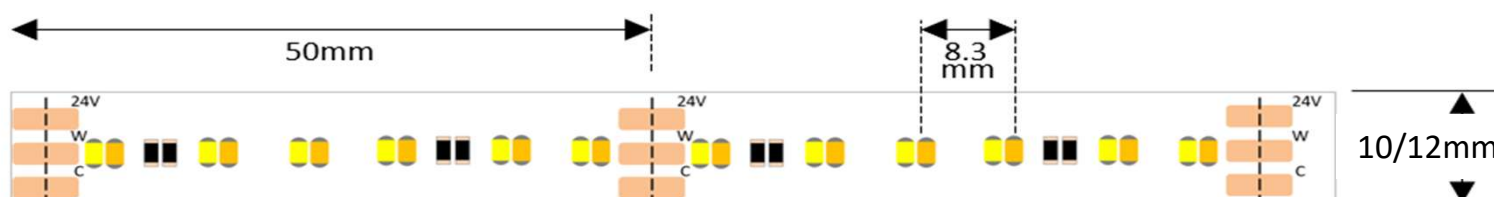
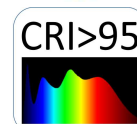
Features: Tunable single CCT mix - 5M Length

⚙ Wattage	9Watt
⚙ Installation	Adhesive Tape
⚙ Cable	3 Core
⚙ Control	Triac/0-10/DMX/KNX
⚙ Cutting points	50mm
⚙ Constant Voltage PSU	24Volt
⚙ Beam angle	180°
⚙ IP option	IP20
⚙ Colour Rendering Index	CRI> 80Ra+
⚙ CCT:	(Kelvin) 2700K/3000K/4000K/5500K/6000K
⚙ Dimensions: (custom)	L: 5 Metre / 10mm/12mm
*Bespoke lengths available – (1~30M single length - Bespoke lengths available)	

Ref:

IP20 = GHSF2216TSAH2410

IP67 = GHSF2216TSAH2412





Pro Series Ribbon Tape

GHSSMCOB24276 / 9.6Watt perMetre

LED Tunable Seamless COB Constant Voltage

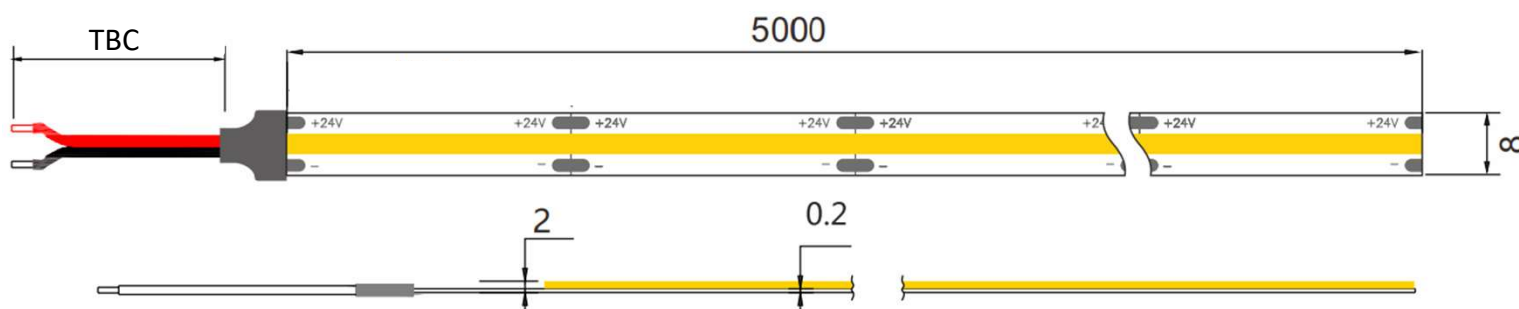
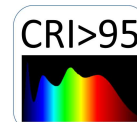
Tunable White Seamless Ribbon Strip offers versatility in providing the exact colour temperature light required for your project. This Dual LED solution is designed for seamless integration, providing dynamic control over colour temperature to suit any mood or setting.

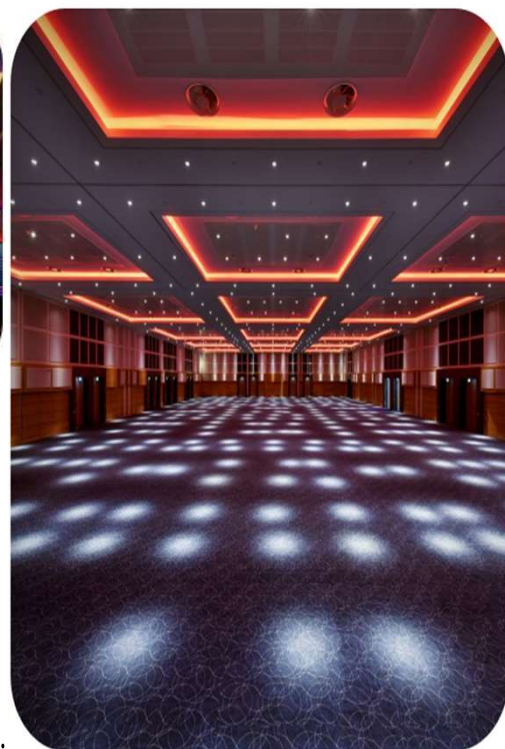
. It is compatible with DMX, 0-10V, and DALI protocols, and works Seamlessly with professional controllers such as Rako, Lutron, Crestron, and many other dimmer systems.

Features: Tunable single CCT mix - 5M Length

- ⚙ Wattage 9.6Watt
- ⚙ Single board-circuit body Seamless
- ⚙ Installation Adhesive Tape
- ⚙ Cable 3 Core
- ⚙ Control Triac/0-10/DMX/KNX
- ⚙ Cutting points 28mm
- ⚙ Constant Voltage PSU 24Volt
- ⚙ Beam angle 180°
- ⚙ IP option IP20
- ⚙ Colour Rendering Index CRI> 80Ra+
- ⚙ CCT: (Kelvin) 2700K/3000K/4000K/5500K/6000K
- ⚙ Dimensions: (custom) L: 5 Metre x 8mm x 2mm

*Bespoke lengths available





Pro Series Ribbon Tape

SMCOB24RGBGHS / 16.8Watt perMetre

LED RGB Seamless COB Constant Voltage

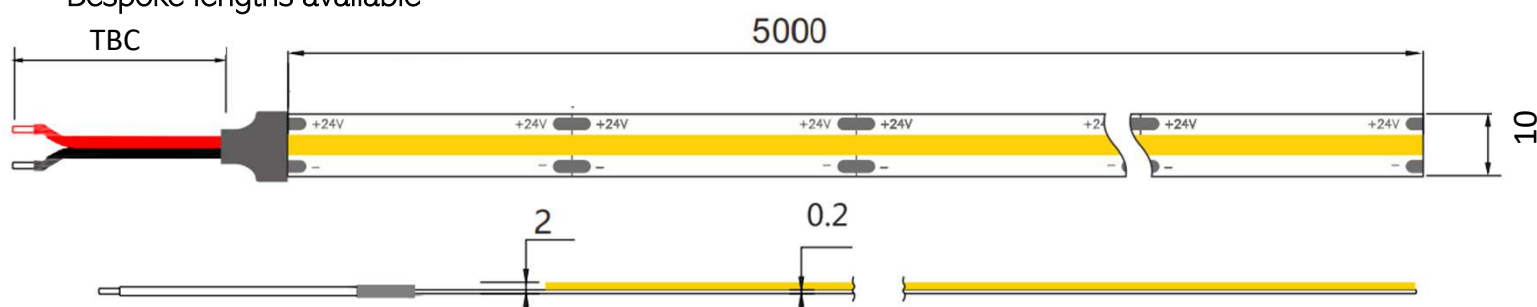
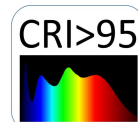
This LED Pro Series Ribbon Tape series has been designed with new high efficiency seamless COB LED which provides high light performance and advanced durability protection. This energy efficient LED series provides ultra low energy consumption without losing light quality in required specific locations. It is compatible with DMX, 0-10V, and DALI protocols, and works Seamlessly with professional controllers such as Rako, Lutron, Crestron, and many other systems.

Features: Colour Mix Dimmable 5M Length

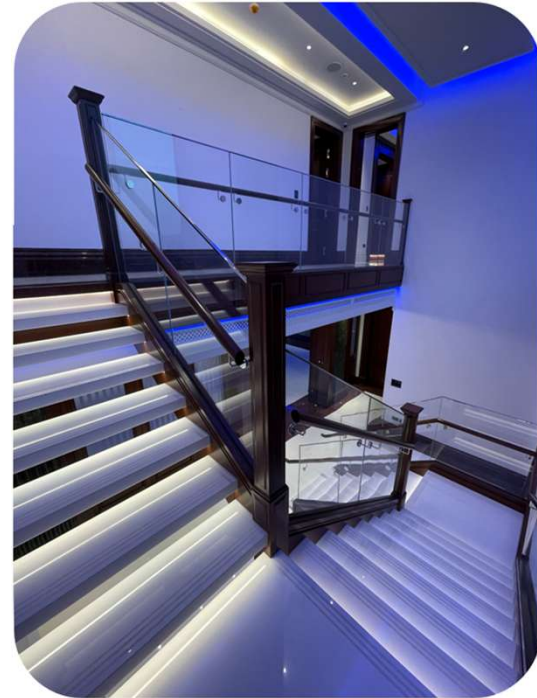
⚙ Wattage	16.8Watt
⚙ Single board-circuit body	Seamless
⚙ Installation	Adhesive Tape
⚙ Cable	4 Core
⚙ Control	Triac/0-10-DMX/KNX
⚙ Cutting points	50mm
⚙ Constant Voltage PSU	24Volt
⚙ Beam angle	180°
⚙ IP option	IP20
⚙ Colour Rendering Index	CRI> 80Ra+
⚙ CCT:	RGB
	Red/green/blue



⚙ Dimensions: (custom)	L: 5 Metre x 10mm x 2mm
*Bespoke lengths available	



Ghs Special Projects Ltd, Manchester, +44 0161 737 7333



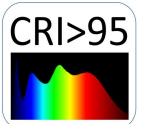
Pro Series Ribbon Tape

GHSF2216TSAH24 /19.2W–38.4W perMetre
LED Tunable SMD Constant Voltage

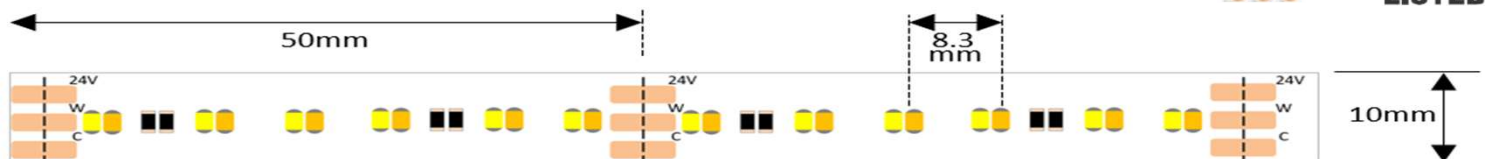
Tunable White Seamless Ribbon Strip offers versatility in providing the exact colour temperature light required for your project. This Dual LED solution is designed for seamless integration, providing dynamic control over colour temperature to suit any mood or setting. It is compatible with DMX, 0–10V, and DALI protocols, and works Seamlessly with professional controllers such as Rako, Lutron, Crestron, and many other systems.

Features: Tunable single CCT mix - 5M Length

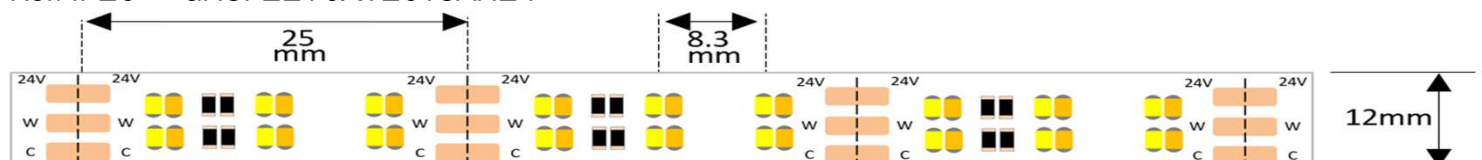
- ⚙ Wattage 19.2Watt / 38.4Watt
 - ⚙ Cutting points 50mm / 25mm
 - ⚙ Installation Adhesive Tape
 - ⚙ Cable 3 Core
 - ⚙ Control Triac/0-10/DMX/KNX
 - ⚙ Constant Voltage PSU 24Volt
 - ⚙ Beam angle 180°
 - ⚙ IP option IP20 / IP65
 - ⚙ Colour Rendering Index CRI> 80Ra+
 - ⚙ CCT: (Kelvin) 2700K/3000K/4000K/5500K/6000K
 - ⚙ Dimensions: (custom) L: 5 Metre / 10mm/12mm
- *Bespoke lengths available – (1~30M single length - Bespoke lengths available)

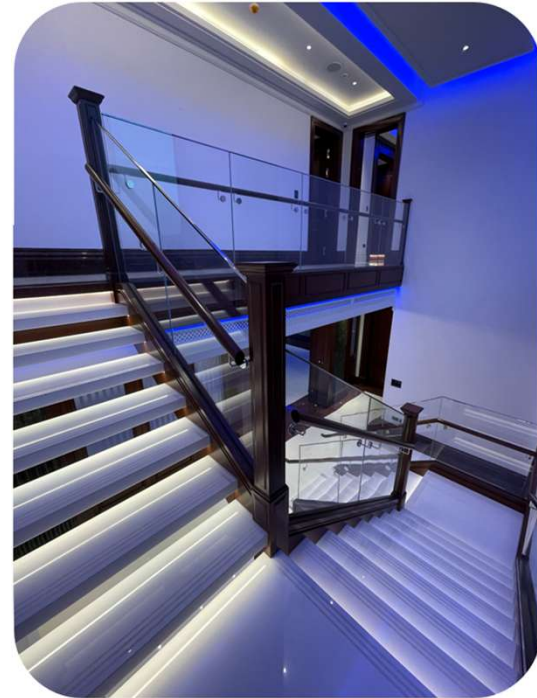


Ref: IP20 = GHSF2216A120TSAH24 – IP67 = GHSF2216X120TSAH24



Ref: IP20 = GHSF2216X120TSAH24





Pro Series Ribbon Tape

GHSF2216A60SADTW24/10W-20W perMetre

LED Tunable SMD Constant Voltage

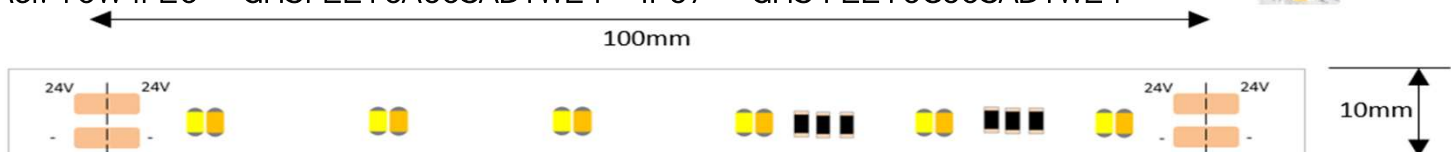
Dim to Warm Ribbon Strip offers perfect dimming from neutral white to very warm white; the colour temperature of the light just dims to a lovely cosy yellow 1800 colour temperature of white perfect for your home or project. This Dual LED solution is designed for seamless integration, providing dynamic control over colour temperature to suit any mood or setting. It is compatible with DMX, 0-10V, and DALI protocols, and works Seamlessly with professional controllers such as Rako, Lutron, Crestron, and many systems.

Features: Tunable single colour mix - 5M Length

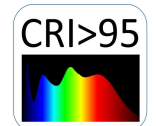
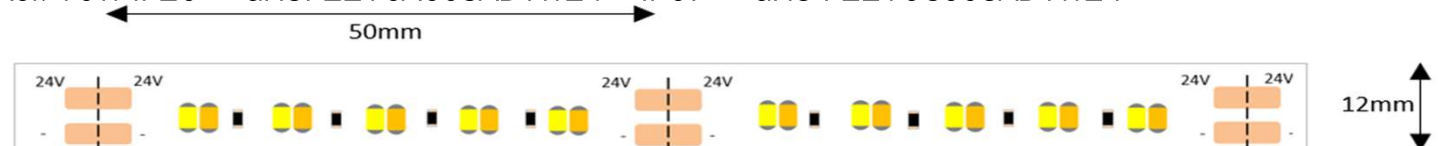
- ⚙ Single board-circuit body
- ⚙ Wattage Options PerM 10W - 20W
- ⚙ cutting points 100mm - 50mm
- ⚙ Constant Voltage @24Volt
- ⚙ Lumen per metre 950lm - 1900lm
- ⚙ Beam angle 120°
- ⚙ LED chip (2216) 120 - 240 pcs PerM
- ⚙ IP option IP20-IP67
- ⚙ Colour Rendering Index CRI> 95+Ra
- ⚙ CCT: (Kelvin) 1800K/2800K
- ⚙ Average lifetime 50,000 hours
- ⚙ Dimensions: (mm) 10 X 2 - 12 X 2

(As standard 5M length – (1~30M single length - Bespoke lengths available)

Ref: 10W IP20 = GHSF2216A60SADTW24 – IP67 = GHS F2216C60SADTW24



Ref: 10W IP20 = GHSF2216A60SADTW24 – IP67 = GHS F2216C60SADTW24





Pro Series Ribbon Tape

GHSF5050A30WPC24 / 24Watt PerMetre
LED SMD Constant Current Voltage Protection

RGB+WW Ribbon Strip offers great variation of colour mixing and dimming from neutral white to very warm white; the colour temperature of the light adds mood lighting and task lighting from one single strip perfect for your home or project. This LED solution is designed for seamless integration through colours of any choice, providing dynamic control over colour temperature to suit any mood or setting. . It is compatible with DMX, 0–10V, and DALI protocols, and works Seamlessly with professional controllers such as Rako, Lutron, Crestron, and many other dimmer systems.

Features: RGBWW colourMix - 5M Length

- ⚙ Single board-circuit body Constant Current & Constant Voltage
- ⚙ Wattage Options PerM 24W
- ⚙ cutting points 6 LEDs100mm
- ⚙ Constant Voltage @24Volt
- ⚙ Beam angle 120°
- ⚙ LED chip (5050) 60 pcs PerM
- ⚙ IP option IP20-IP67
- ⚙ Average lifetime 50,000 hours
- ⚙ Colour Rendering Index CRI> 95+Ra
- ⚙ White CCT: (Kelvin) RGB 2500K/6000K

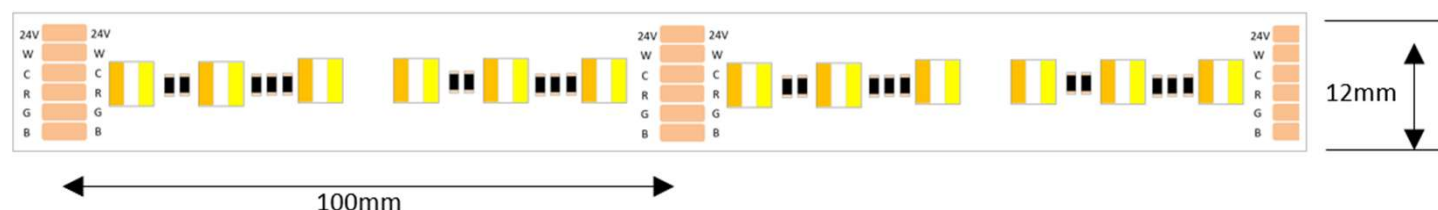


- ⚙ Dimensions: (mm) 12 X 2

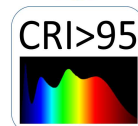
(As standard 5M length – (1~30M single length - Bespoke lengths available)

Ref: IP20 = GHSF5050A30WPC24IP20

Ref: IP67 = GHSF5050A30WPC24IP67



Ghs Special Projects Ltd, Manchester, +44 0161 737 7333



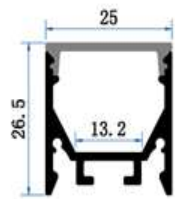
LED Profile Extrusion

LED Profile extrusions

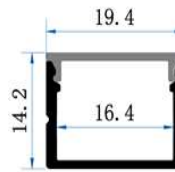
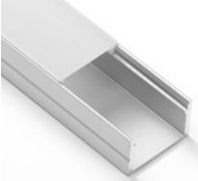
This is our high grade professional durable solution for installing LED ribbon. Each extrusion is made of T5 aircraft aluminium which enhances thermal performance and protects the ribbon from heat that is produced when the LED is at its brightest level, the included diffuser reduces the visibility of direct eye contact to the bare LED and minimizes any discomfort and LED spotting on reflective surfaces.

- ⚙ 1/2/3 Metre Lengths
- ⚙ Supplied with clips & end caps where applicable
- ⚙ Frosted diffuser

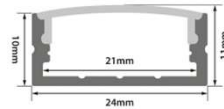
PC08 Surface Mount



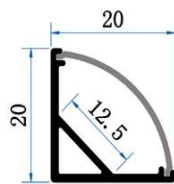
PC28 Surface Mount



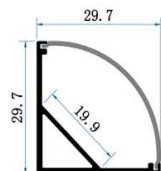
PC07 Surface Mount



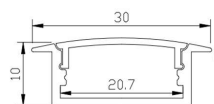
PC16 Corner Mount



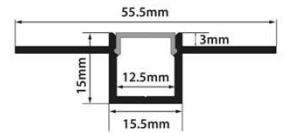
PC17 Corner Mount



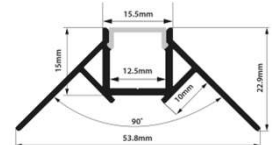
PC12 Recessed



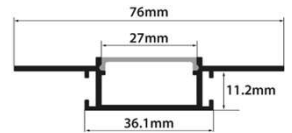
PC i1 Plaster In



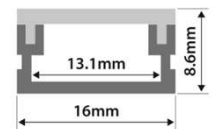
PC i2 Corner Plaster In



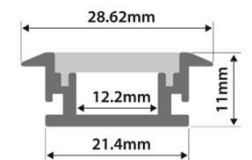
PC i3 Plaster In



PC26 Waterproof Surface Mount



PC27 Waterproof Recessed



PC19 Surface Mount

