

S P E C I A L P R O J E C T S L T D

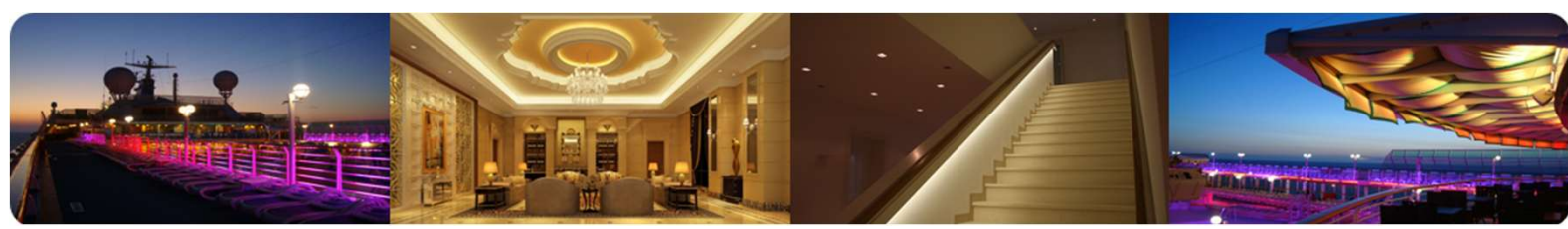
# Architectural Profile Solutions For LED Pro Series Ribbon Installations

Ghs Special Projects Ltd  
GHS House  
Manchester

+44 0161 737 7333  
Email: [sales@ghsspecialprojects.com](mailto:sales@ghsspecialprojects.com)  
Website: [www.ghsspecialprojects.com](http://www.ghsspecialprojects.com)







S P E C I A L   P R O J E C T S   L T D

# Architectural Profile Solutions

## Plaster In



CUSTOM  
ELECTRONIC  
DESIGN &  
INSTALLATION  
ASSOCIATION



British  
Chambers of  
Commerce  
The Ultimate Business Network





## PRODUCT DETAILS: PC i1

### Plaster-In Aluminium Profile Channel

This plaster-in aluminium recessed profile is designed to integrate seamlessly into walls and ceilings, creating a clean, architectural lighting finish. Manufactured from high-quality extruded aluminium and supplied with an opaque polycarbonate diffuser, it allows lighting to be fully embedded for a smooth, flush appearance.

Ideal for both residential and commercial applications, the profile supports creative lighting designs and can be combined with other profiles to form continuous, infinity-style linear light runs.

### Key Features

- Plaster-in recessed aluminium profile for walls and ceilings
- Clean, flush integration for architectural lighting applications
- Suitable for multiple project types and lighting designs
- Joinable sections allow continuous linear or infinity light strips

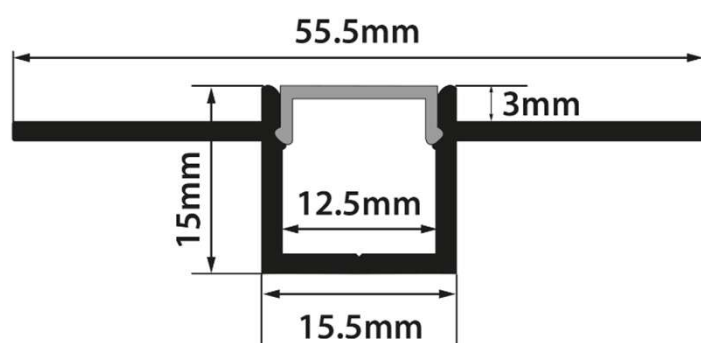
### Specifications

**Material:** Extruded Aluminium

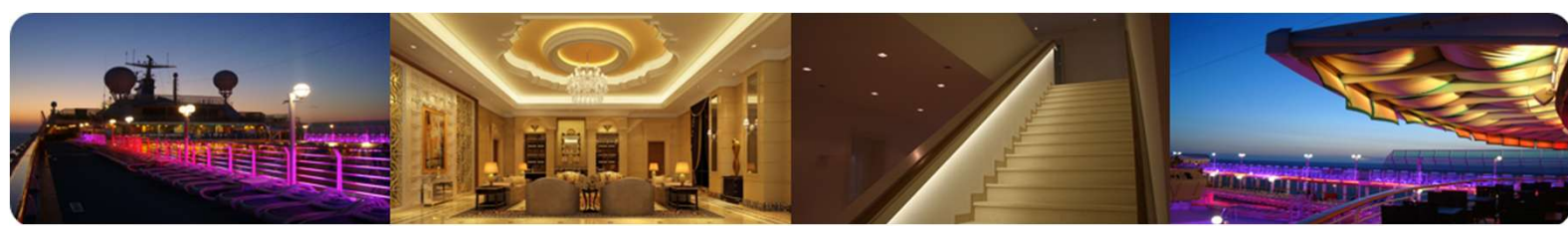
**Aluminium Grade:** 6063 T5 (Aircraft Grade)

**Diffuser:** Opaque Polycarbonate

**Lengths:** 1 m / 2 m / 3 m







## PRODUCT DETAILS: PC i2

### Plaster-In Aluminium Profile Channel

This plaster-in aluminium recessed profile is designed to integrate seamlessly into walls and ceilings, creating a clean, architectural lighting finish. Manufactured from high-quality extruded aluminium and supplied with an opaque polycarbonate diffuser, it allows lighting to be fully embedded for a smooth, flush appearance.

Ideal for both residential and commercial applications, the profile supports creative lighting designs and can be combined with other profiles to form continuous, infinity-style linear light runs.

### Key Features

- Plaster-in recessed aluminium profile for walls and ceilings
- Clean, flush integration for architectural lighting applications
- Suitable for multiple project types and lighting designs
- Joinable sections allow continuous linear or infinity light strips

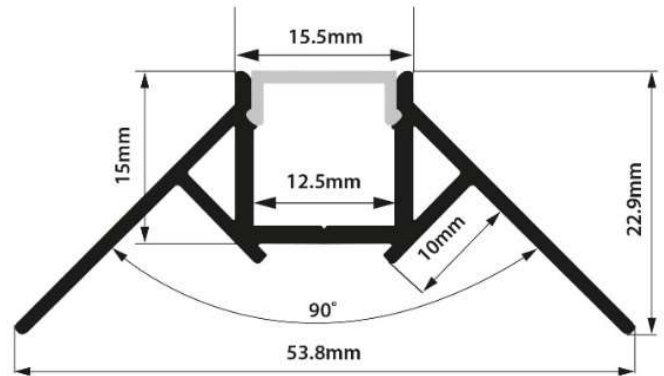
### Specifications

**Material:** Extruded Aluminium

**Aluminium Grade:** 6063 T5 (Aircraft Grade)

**Diffuser:** Opaque Polycarbonate

**Lengths:** 1 m / 2 m / 3m







## PRODUCT DETAILS: PC i3

### Plaster-In Aluminium Profile Channel

This plaster-in aluminium recessed profile is designed to integrate seamlessly into walls and ceilings, creating a clean, architectural lighting finish. Manufactured from high-quality extruded aluminium and supplied with an opaque polycarbonate diffuser, it allows lighting to be fully embedded for a smooth, flush appearance.

Ideal for both residential and commercial applications, the profile supports creative lighting designs and can be combined with other profiles to form continuous, infinity-style linear light runs.

### Key Features

- Plaster-in recessed aluminium profile for walls and ceilings
- Clean, flush integration for architectural lighting applications
- Suitable for multiple project types and lighting designs
- Joinable sections allow continuous linear or infinity light strips

### Specifications

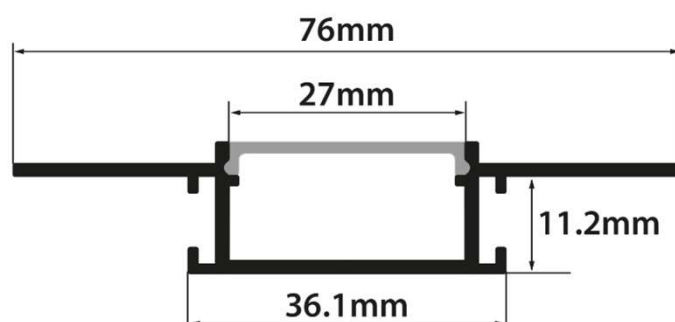
**Material:** Extruded Aluminium

**Aluminium Grade:** 6063 T5 (Aircraft Grade)

**Diffuser:** Opaque Polycarbonate

**Lengths:** 1 m / 2 m / 3m

## Plaster-In







## PRODUCT DETAILS: PC i4

### Plaster-In Aluminium Profile Channel

This plaster-in aluminium recessed profile is designed to integrate seamlessly into walls and ceilings, creating a clean, architectural lighting finish. Manufactured from high-quality extruded aluminium and supplied with an opaque polycarbonate diffuser, it allows lighting to be fully embedded for a smooth, flush appearance.

Ideal for both residential and commercial applications, the profile supports creative lighting designs and can be combined with other profiles to form continuous, infinity-style linear light runs.

### Key Features

- Plaster-in recessed aluminium profile for walls and ceilings
- Clean, flush integration for architectural lighting applications
- Suitable for multiple project types and lighting designs
- Joinable sections allow continuous linear or infinity light strips

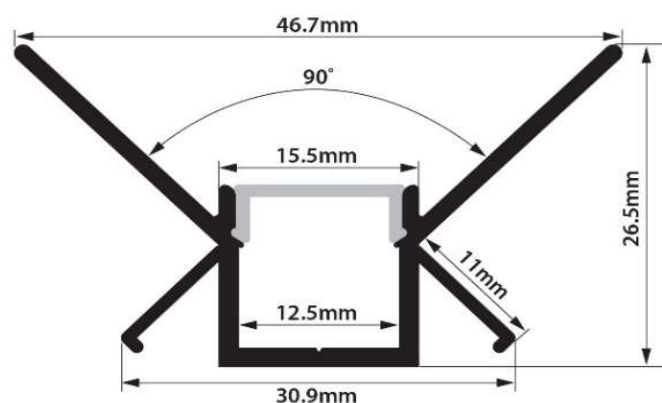
### Specifications

**Material:** Extruded Aluminium

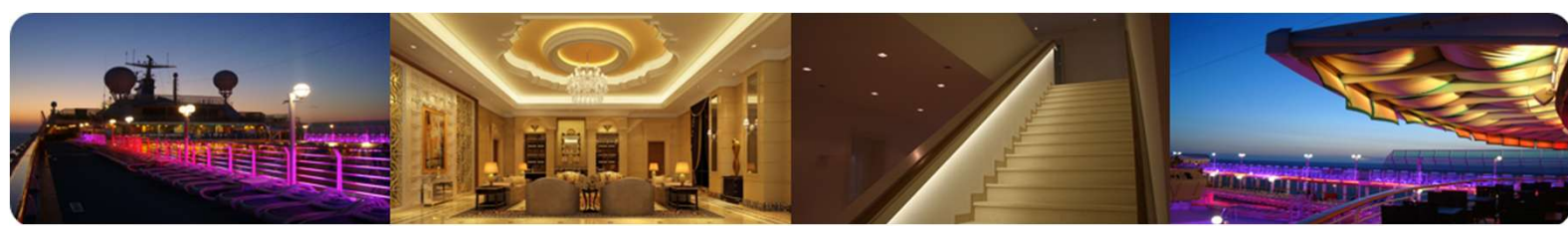
**Aluminium Grade:** 6063 T5 (Aircraft Grade)

**Diffuser:** Opaque Polycarbonate

**Lengths:** 1 m / 2 m / 3m







S P E C I A L   P R O J E C T S   L T D

Architectural Profile Solutions

Surface Mount



CUSTOM  
ELECTRONIC  
DESIGN &  
INSTALLATION  
ASSOCIATION



British  
Chambers of  
Commerce  
The Ultimate Business Network





## PRODUCT DETAILS: PC 01

### Aluminium Profile Channel

This aluminium surface mount profile is designed to integrate seamlessly onto walls and ceilings, creating a clean, architectural lighting finish. Manufactured from high-quality extruded aluminium and supplied with an opaque polycarbonate diffuser, it allows lighting to be fully embedded for a smooth, flush appearance.

Ideal for both residential and commercial applications, the profile supports creative lighting designs and can be combined with other profiles to form continuous, infinity-style linear light runs.

### Key Features

- Surface mounting aluminium profile for walls and ceilings
- Clean, flush integration for architectural lighting applications
- Suitable for multiple project types and lighting designs
- Joinable sections allow continuous linear or infinity light strips

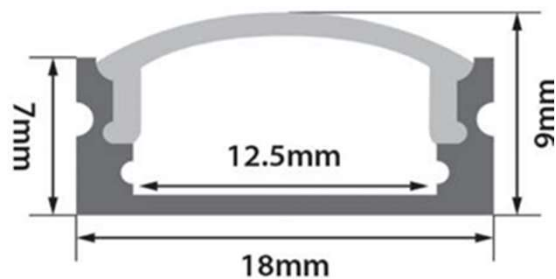
### Specifications

**Material:** Extruded Aluminium

**Aluminium Grade:** 6063 T5 (Aircraft Grade)

**Diffuser:** Opaque Polycarbonate

**Lengths:** 1 m / 2 m / 3m







## PRODUCT DETAILS: PC 02

### Aluminium Profile Channel

This aluminium surface mount profile is designed to integrate seamlessly onto walls and ceilings, creating a clean, architectural lighting finish. Manufactured from high-quality extruded aluminium and supplied with an opaque polycarbonate diffuser, it allows lighting to be fully embedded for a smooth, flush appearance.

Ideal for both residential and commercial applications, the profile supports creative lighting designs and can be combined with other profiles to form continuous, infinity-style linear light runs.

### Key Features

- Surface mounting aluminium profile for walls and ceilings
- Clean, flush integration for architectural lighting applications
- Suitable for multiple project types and lighting designs
- Joinable sections allow continuous linear or infinity light strips

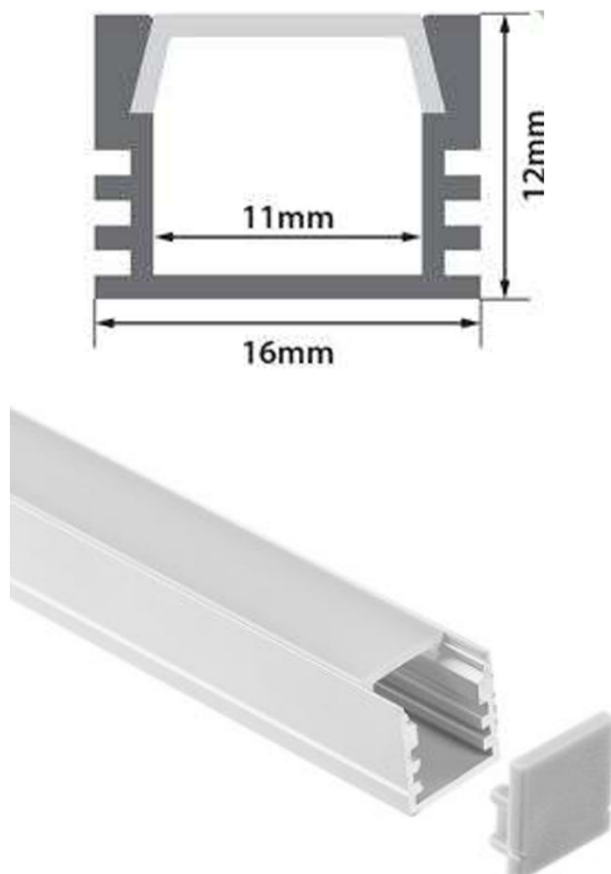
### Specifications

**Material:** Extruded Aluminium

**Aluminium Grade:** 6063 T5 (Aircraft Grade)

**Diffuser:** Opaque Polycarbonate

**Lengths:** 1 m / 2 m / 3m







## PRODUCT DETAILS: PC 03

### Aluminium Profile Channel

This aluminium surface mount profile is designed to integrate seamlessly onto walls and ceilings, creating a clean, architectural lighting finish. Manufactured from high-quality extruded aluminium and supplied with an opaque polycarbonate diffuser, it allows lighting to be fully embedded for a smooth, flush appearance.

Ideal for both residential and commercial applications, the profile supports creative lighting designs and can be combined with other profiles to form continuous, infinity-style linear light runs.

### Key Features

- Surface mounting aluminium profile for walls and ceilings
- Clean, flush integration for architectural lighting applications
- Suitable for multiple project types and lighting designs
- Joinable sections allow continuous linear or infinity light strips

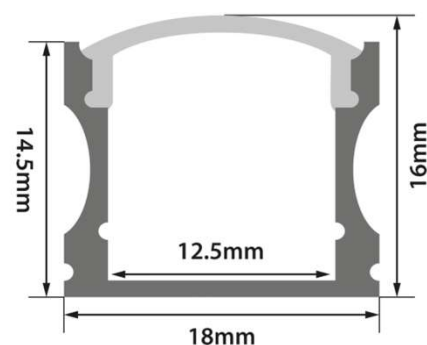
### Specifications

**Material:** Extruded Aluminium

**Aluminium Grade:** 6063 T5 (Aircraft Grade)

**Diffuser:** Opaque Polycarbonate

**Lengths:** 1 m / 2 m / 3m







## PRODUCT DETAILS: PC 04

### Aluminium Profile Channel

This aluminium surface mount profile is designed to integrate seamlessly onto walls and ceilings, creating a clean, architectural lighting finish. Manufactured from high-quality extruded aluminium and supplied with an opaque polycarbonate diffuser, it allows lighting to be fully embedded for a smooth, flush appearance.

Ideal for both residential and commercial applications, the profile supports creative lighting designs and can be combined with other profiles to form continuous, infinity-style linear light runs.

### Key Features

- Surface mounting aluminium profile for walls and ceilings
- Clean, flush integration for architectural lighting applications
- Suitable for multiple project types and lighting designs
- Joinable sections allow continuous linear or infinity light strips

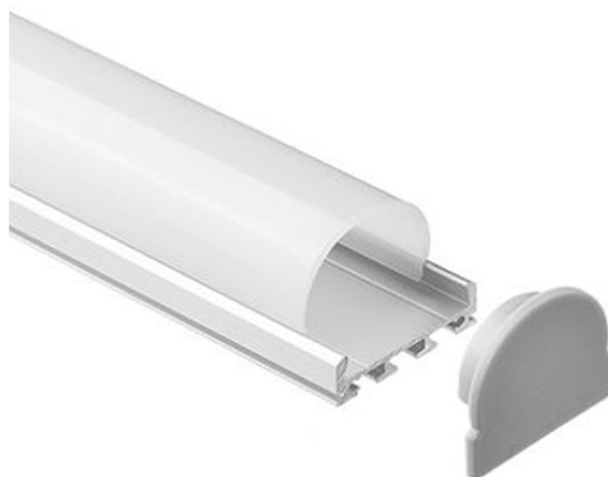
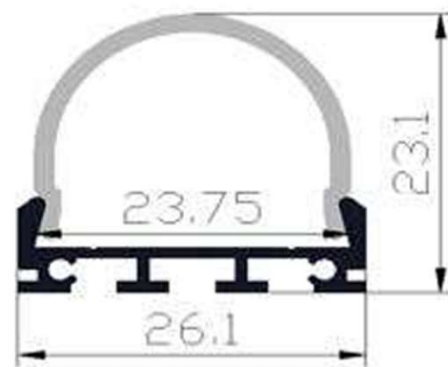
### Specifications

**Material:** Extruded Aluminium

**Aluminium Grade:** 6063 T5 (Aircraft Grade)

**Diffuser:** Opaque Polycarbonate

**Lengths:** 1 m / 2 m / 3m







## PRODUCT DETAILS: PC 05

### Aluminium Profile Channel

This aluminium surface mount profile is designed to integrate seamlessly onto walls and ceilings, creating a clean, architectural lighting finish. Manufactured from high-quality extruded aluminium and supplied with an opaque polycarbonate diffuser, it allows lighting to be fully embedded for a smooth, flush appearance.

Ideal for both residential and commercial applications, the profile supports creative lighting designs and can be combined with other profiles to form continuous, infinity-style linear light runs.

### Key Features

- Surface mounting aluminium profile for walls and ceilings
- Clean, flush integration for architectural lighting applications
- Suitable for multiple project types and lighting designs
- Joinable sections allow continuous linear or infinity light strips

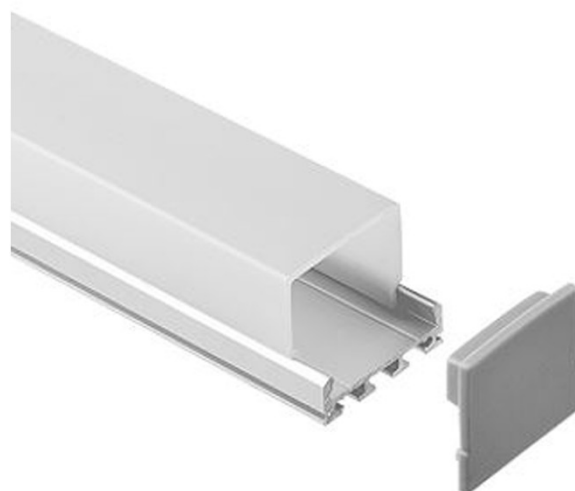
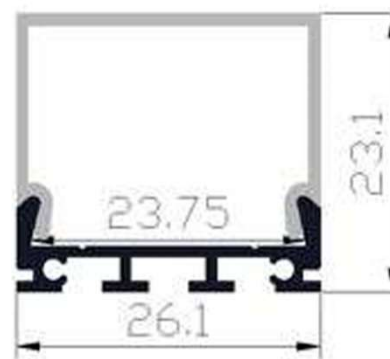
### Specifications

**Material:** Extruded Aluminium

**Aluminium Grade:** 6063 T5 (Aircraft Grade)

**Diffuser:** Opaque Polycarbonate

**Lengths:** 1 m / 2 m / 3m







## PRODUCT DETAILS: PC 06

### Aluminium Profile Channel

This aluminium surface mount profile is designed to integrate seamlessly onto walls and ceilings, creating a clean, architectural lighting finish. Manufactured from high-quality extruded aluminium and supplied with an opaque polycarbonate diffuser, it allows lighting to be fully embedded for a smooth, flush appearance.

Ideal for both residential and commercial applications, the profile supports creative lighting designs and can be combined with other profiles to form continuous, infinity-style linear light runs.

### Key Features

- Surface mounting aluminium profile for walls and ceilings
- Clean, flush integration for architectural lighting applications
- Suitable for multiple project types and lighting designs
- Joinable sections allow continuous linear or infinity light strips

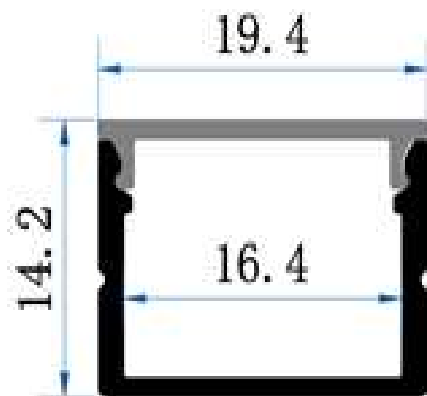
### Specifications

**Material:** Extruded Aluminium

**Aluminium Grade:** 6063 T5 (Aircraft Grade)

**Diffuser:** Opaque Polycarbonate

**Lengths:** 1 m / 2 m / 3m







## PRODUCT DETAILS: PC 07

### Aluminium Profile Channel

This aluminium surface mount profile is designed to integrate seamlessly onto walls and ceilings, creating a clean, architectural lighting finish. Manufactured from high-quality extruded aluminium and supplied with an opaque polycarbonate diffuser, it allows lighting to be fully embedded for a smooth, flush appearance.

Ideal for both residential and commercial applications, the profile supports creative lighting designs and can be combined with other profiles to form continuous, infinity-style linear light runs.

### Key Features

- Surface mounting aluminium profile for walls and ceilings
- Clean, flush integration for architectural lighting applications
- Suitable for multiple project types and lighting designs
- Joinable sections allow continuous linear or infinity light strips

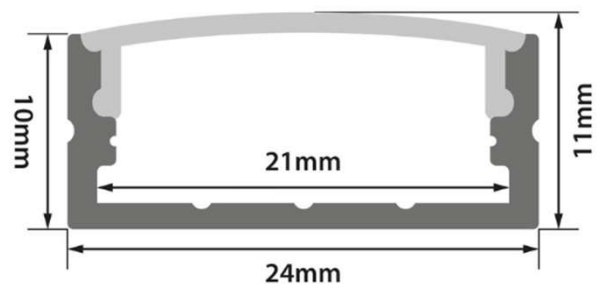
### Specifications

**Material:** Extruded Aluminium

**Aluminium Grade:** 6063 T5 (Aircraft Grade)

**Diffuser:** Opaque Polycarbonate

**Lengths:** 1 m / 2 m / 3m







## PRODUCT DETAILS: PC 08

### Aluminium Profile Channel

This aluminium surface mount profile is designed to integrate seamlessly onto walls and ceilings, creating a clean, architectural lighting finish. Manufactured from high-quality extruded aluminium and supplied with an opaque polycarbonate diffuser, it allows lighting to be fully embedded for a smooth, flush appearance.

Ideal for both residential and commercial applications, the profile supports creative lighting designs and can be combined with other profiles to form continuous, infinity-style linear light runs.

### Key Features

- Surface mounting aluminium profile for walls and ceilings
- Clean, flush integration for architectural lighting applications
- Suitable for multiple project types and lighting designs
- Joinable sections allow continuous linear or infinity light strips

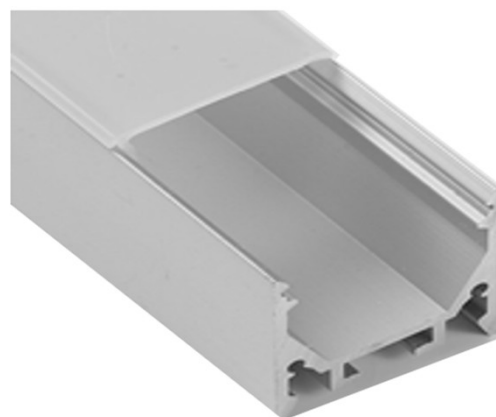
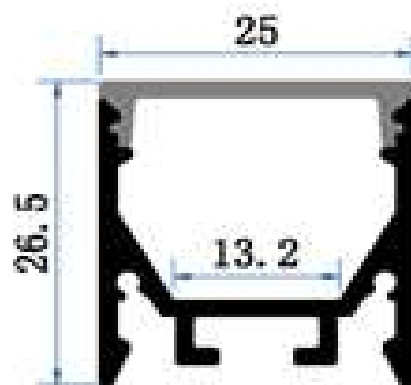
### Specifications

**Material:** Extruded Aluminium

**Aluminium Grade:** 6063 T5 (Aircraft Grade)

**Diffuser:** Opaque Polycarbonate

**Lengths:** 1 m / 2 m / 3m







## PRODUCT DETAILS: PC 28

### Aluminium Profile Channel

This aluminium surface mount profile is designed to integrate seamlessly onto walls and ceilings, creating a clean, architectural lighting finish. Manufactured from high-quality extruded aluminium and supplied with an opaque polycarbonate diffuser, it allows lighting to be fully embedded for a smooth, flush appearance.

Ideal for both residential and commercial applications, the profile supports creative lighting designs and can be combined with other profiles to form continuous, infinity-style linear light runs.

### Key Features

- Surface mounting aluminium profile for walls and ceilings
- Clean, flush integration for architectural lighting applications
- Suitable for multiple project types and lighting designs
- Joinable sections allow continuous linear or infinity light strips

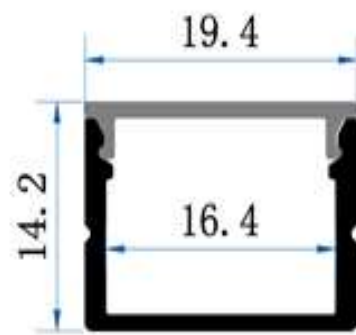
### Specifications

**Material:** Extruded Aluminium

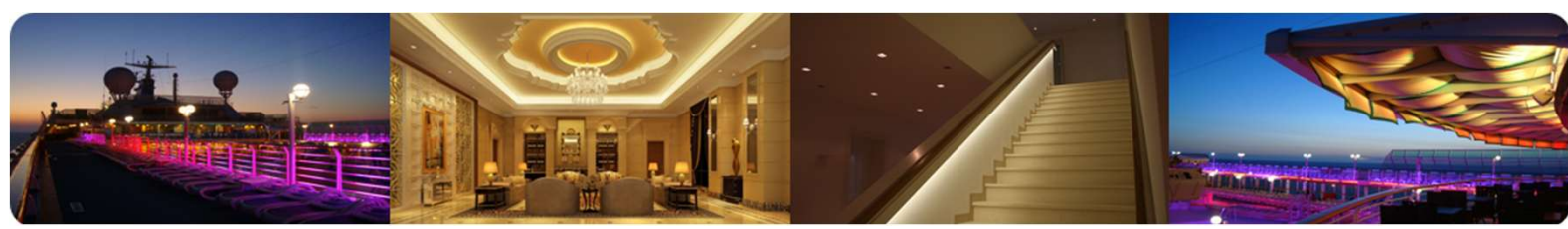
**Aluminium Grade:** 6063 T5 (Aircraft Grade)

**Diffuser:** Opaque Polycarbonate

**Lengths:** 1 m / 2 m / 3m







S P E C I A L   P R O J E C T S   L T D

# Architectural Profile Solutions

## Recessed



CUSTOM  
ELECTRONIC  
DESIGN &  
INSTALLATION  
ASSOCIATION



British  
Chambers of  
Commerce  
The Ultimate Business Network





## PRODUCT DETAILS: PC 09

### Aluminium Profile Channel

This aluminium recessed profile is designed to integrate seamlessly onto walls and ceilings, creating a clean, architectural lighting finish. Manufactured from high-quality extruded aluminium and supplied with an opaque polycarbonate diffuser, it allows lighting to be fully embedded for a smooth, flush appearance.

Ideal for both residential and commercial applications, the profile supports creative lighting designs and can be combined with other profiles to form continuous, infinity-style linear light runs.

### Key Features

- Recessed mounting aluminium profile for walls and ceilings
- Clean, flush integration for architectural lighting applications
- Suitable for multiple project types and lighting designs
- Joinable sections allow continuous linear or infinity light strips

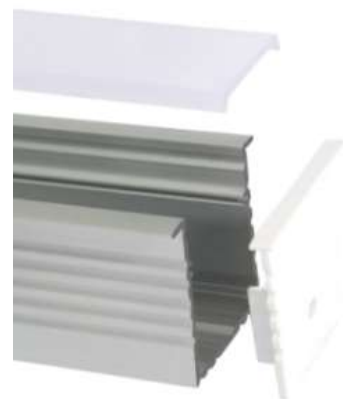
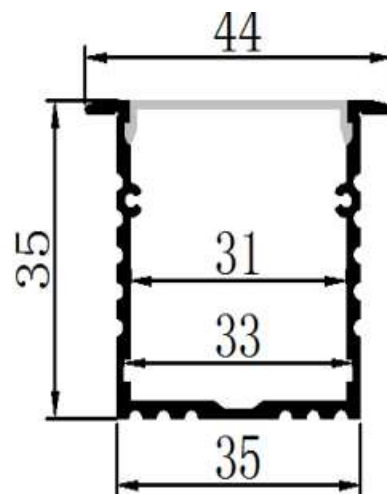
### Specifications

**Material:** Extruded Aluminium

**Aluminium Grade:** 6063 T5 (Aircraft Grade)

**Diffuser:** Opaque Polycarbonate

**Lengths:** 1 m / 2 m / 3m







## PRODUCT DETAILS: PC 10

### Aluminium Profile Channel

This aluminium recessed profile is designed to integrate seamlessly onto walls and ceilings, creating a clean, architectural lighting finish. Manufactured from high-quality extruded aluminium and supplied with an opaque polycarbonate diffuser, it allows lighting to be fully embedded for a smooth, flush appearance.

Ideal for both residential and commercial applications, the profile supports creative lighting designs and can be combined with other profiles to form continuous, infinity-style linear light runs.

### Key Features

- Recessed mounting aluminium profile for walls and ceilings
- Clean, flush integration for architectural lighting applications
- Suitable for multiple project types and lighting designs
- Joinable sections allow continuous linear or infinity light strips

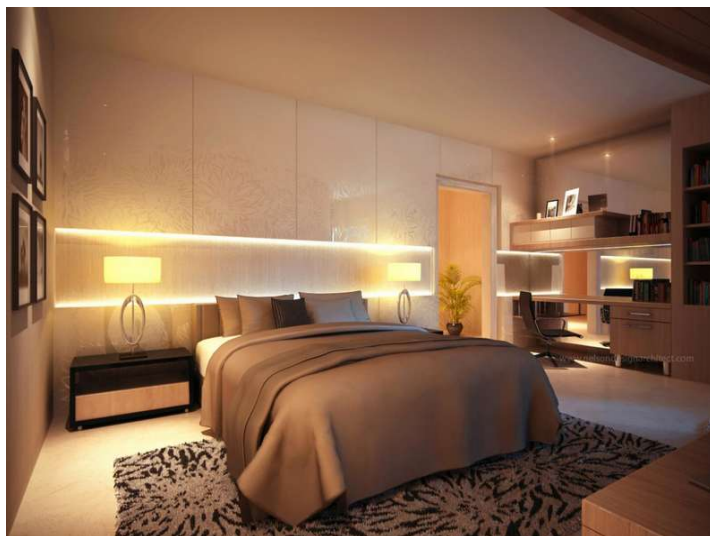
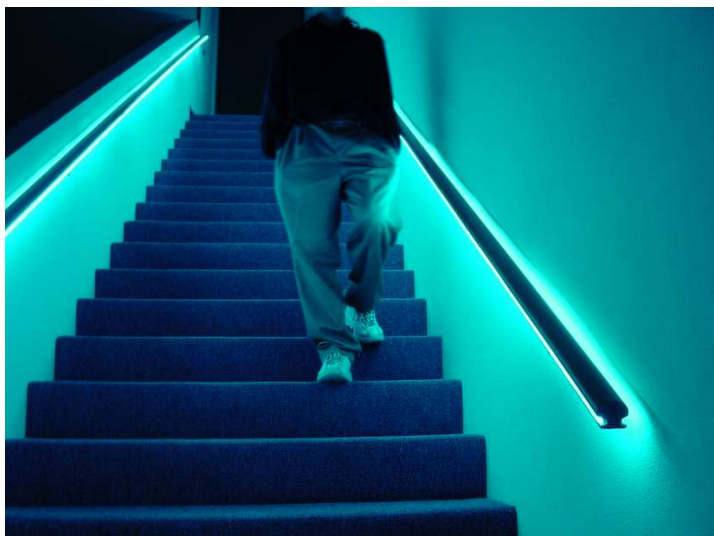
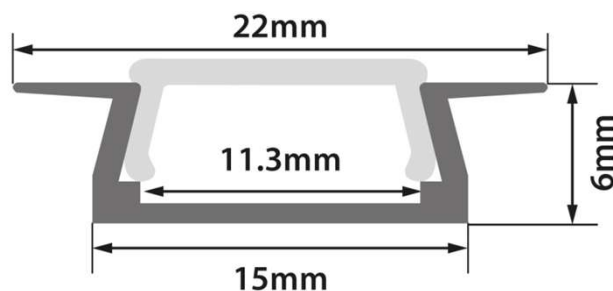
### Specifications

**Material:** Extruded Aluminium

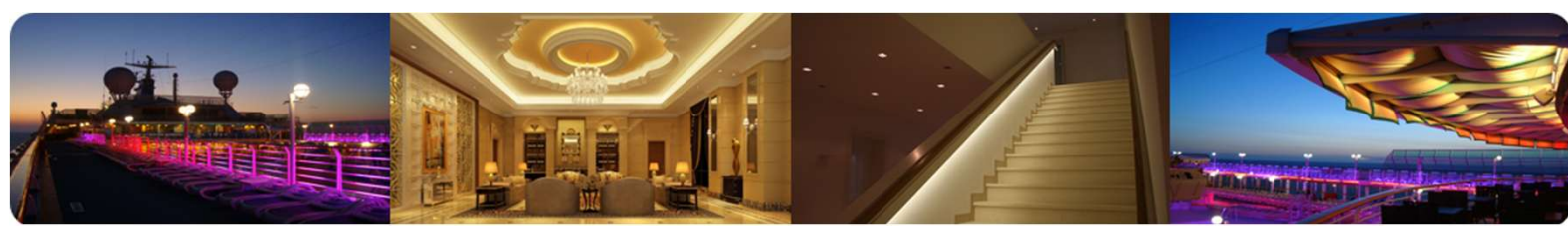
**Aluminium Grade:** 6063 T5 (Aircraft Grade)

**Diffuser:** Opaque Polycarbonate

**Lengths:** 1 m / 2 m / 3m







## PRODUCT DETAILS: PC 11

### Aluminium Profile Channel

This aluminium recessed profile is designed to integrate seamlessly onto walls and ceilings, creating a clean, architectural lighting finish. Manufactured from high-quality extruded aluminium and supplied with an opaque polycarbonate diffuser, it allows lighting to be fully embedded for a smooth, flush appearance.

Ideal for both residential and commercial applications, the profile supports creative lighting designs and can be combined with other profiles to form continuous, infinity-style linear light runs.

### Key Features

- Recessed mounting aluminium profile for walls and ceilings
- Clean, flush integration for architectural lighting applications
- Suitable for multiple project types and lighting designs
- Joinable sections allow continuous linear or infinity light strips

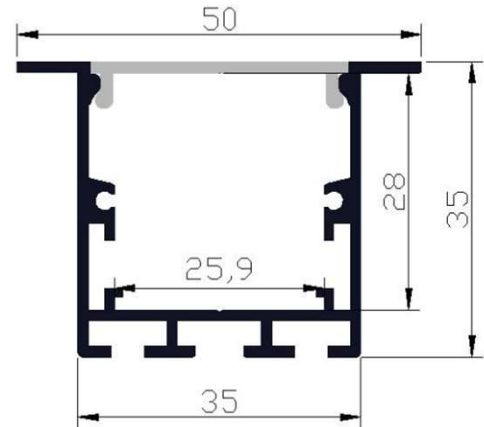
### Specifications

**Material:** Extruded Aluminium

**Aluminium Grade:** 6063 T5 (Aircraft Grade)

**Diffuser:** Opaque Polycarbonate

**Lengths:** 1 m / 2 m / 3m







## PRODUCT DETAILS: PC 12

### Aluminium Profile Channel

This aluminium recessed profile is designed to integrate seamlessly onto walls and ceilings, creating a clean, architectural lighting finish. Manufactured from high-quality extruded aluminium and supplied with an opaque polycarbonate diffuser, it allows lighting to be fully embedded for a smooth, flush appearance.

Ideal for both residential and commercial applications, the profile supports creative lighting designs and can be combined with other profiles to form continuous, infinity-style linear light runs.

### Key Features

- Recessed mounting aluminium profile for walls and ceilings
- Clean, flush integration for architectural lighting applications
- Suitable for multiple project types and lighting designs
- Joinable sections allow continuous linear or infinity light strips

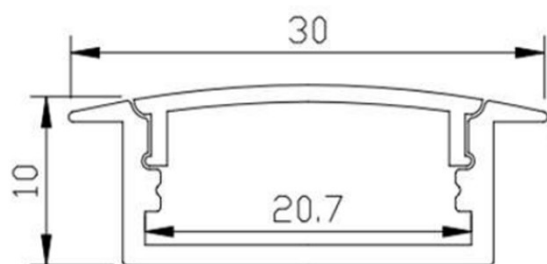
### Specifications

**Material:** Extruded Aluminium

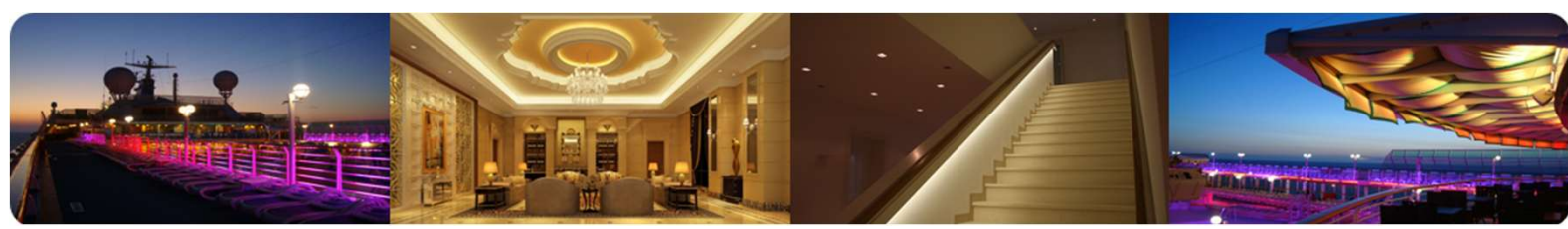
**Aluminium Grade:** 6063 T5 (Aircraft Grade)

**Diffuser:** Opaque Polycarbonate

**Lengths:** 1 m / 2 m / 3m







S P E C I A L   P R O J E C T S   L T D

Architectural Profile Solutions

Optical

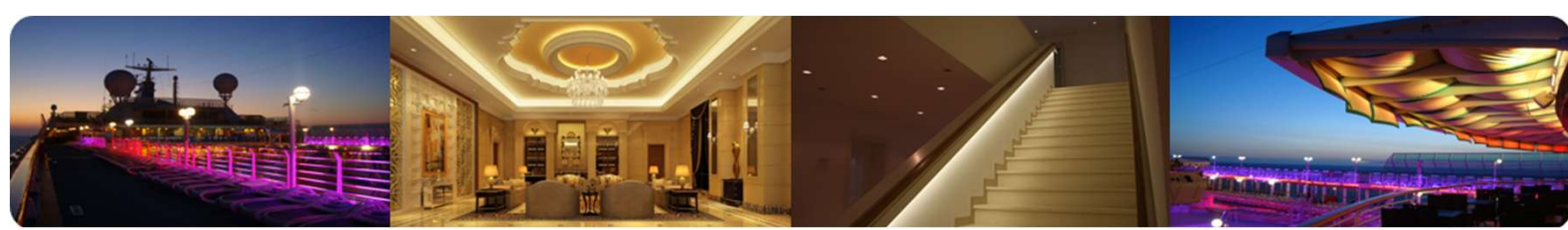


CUSTOM  
ELECTRONIC  
DESIGN &  
INSTALLATION  
ASSOCIATION



British  
Chambers of  
Commerce  
The Ultimate Business Network





## PRODUCT DETAILS: PC 13 beam angle 30°

### Aluminium Profile Channel

This aluminium recessed profile is designed to integrate seamlessly onto walls and ceilings, creating a clean, architectural lighting finish. Manufactured from high-quality extruded aluminium and supplied with an opaque polycarbonate diffuser, it allows lighting to be fully embedded for a smooth, flush appearance.

Ideal for both residential and commercial applications, the profile supports creative lighting designs and can be combined with other profiles to form continuous, infinity-style linear light runs.

### Key Features

- Recessed mounting aluminium profile for walls and ceilings
- Clean, flush integration for architectural lighting applications
- Suitable for multiple project types and lighting designs
- Joinable sections allow continuous linear or infinity light strips

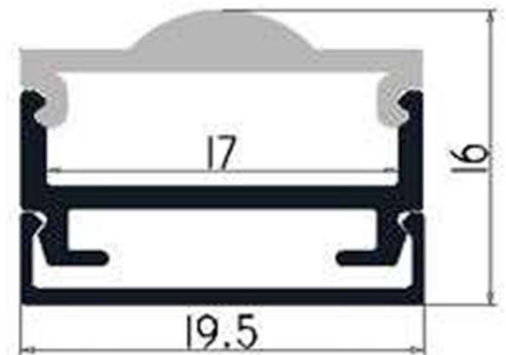
### Specifications

**Material:** Extruded Aluminium

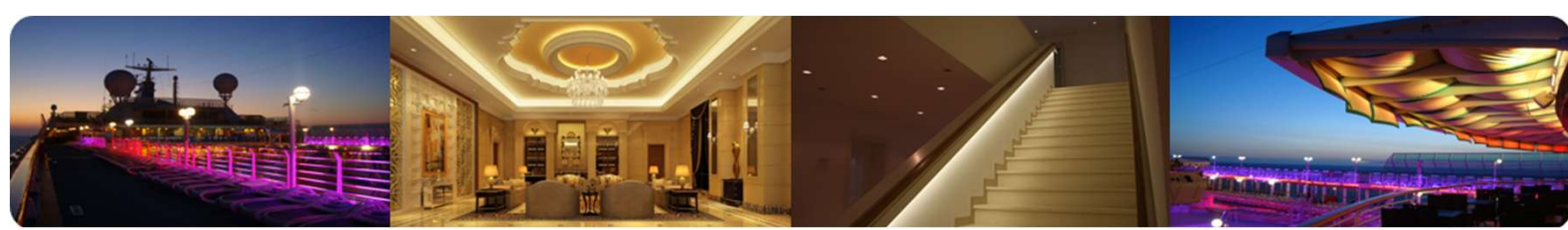
**Aluminium Grade:** 6063 T5 (Aircraft Grade)

**Diffuser:** Opaque Polycarbonate

**Lengths:** 1 m / 2 m / 3m







## PRODUCT DETAILS: PC 14 beam angle 60°

### Aluminium Profile Channel

This aluminium recessed profile is designed to integrate seamlessly onto walls and ceilings, creating a clean, architectural lighting finish. Manufactured from high-quality extruded aluminium and supplied with an opaque polycarbonate diffuser, it allows lighting to be fully embedded for a smooth, flush appearance.

Ideal for both residential and commercial applications, the profile supports creative lighting designs and can be combined with other profiles to form continuous, infinity-style linear light runs.

### Key Features

- Recessed mounting aluminium profile for walls and ceilings
- Clean, flush integration for architectural lighting applications
- Suitable for multiple project types and lighting designs
- Joinable sections allow continuous linear or infinity light strips

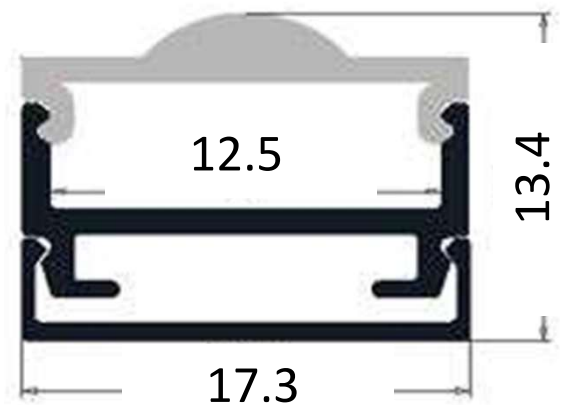
### Specifications

**Material:** Extruded Aluminium

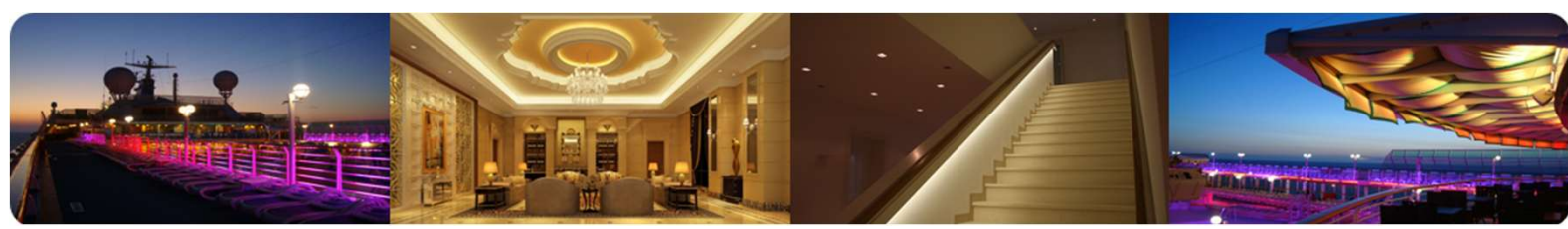
**Aluminium Grade:** 6063 T5 (Aircraft Grade)

**Diffuser:** Opaque Polycarbonate

**Lengths:** 1 m / 2 m / 3m







S P E C I A L   P R O J E C T S   L T D

# Architectural Profile Solutions Corner

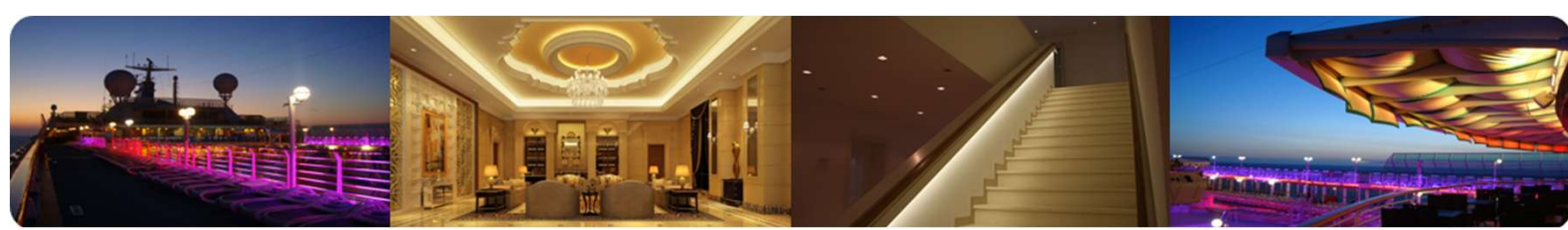


CUSTOM  
ELECTRONIC  
DESIGN &  
INSTALLATION  
ASSOCIATION



British  
Chambers of  
Commerce  
The Ultimate Business Network





## PRODUCT DETAILS: PC 15

### Aluminium Profile Channel

This aluminium corner profile is designed to integrate seamlessly onto walls and ceilings, creating a clean, architectural lighting finish. Manufactured from high-quality extruded aluminium and supplied with an opaque polycarbonate diffuser, it allows lighting to be fully embedded for a smooth, flush appearance.

Ideal for both residential and commercial applications, the profile supports creative lighting designs and can be combined with other profiles to form continuous, infinity-style linear light runs.

### Key Features

- Corner mounting aluminium profile for walls and ceilings
- Clean, flush integration for architectural lighting applications
- Suitable for multiple project types and lighting designs
- Joinable sections allow continuous linear or infinity light strips

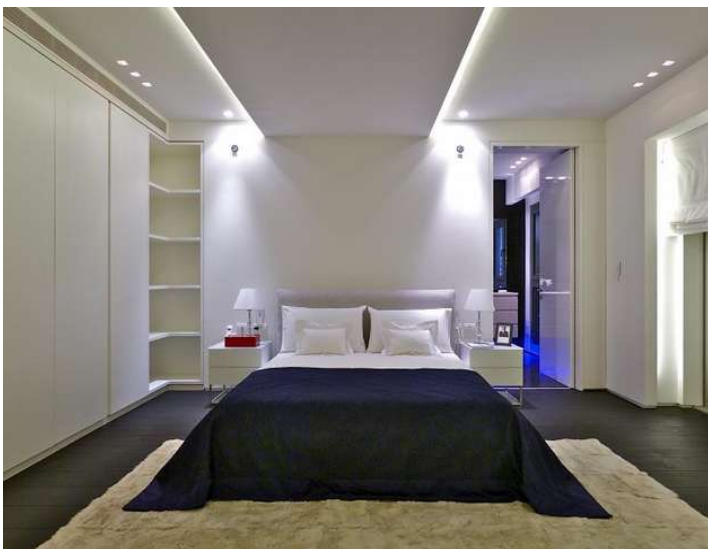
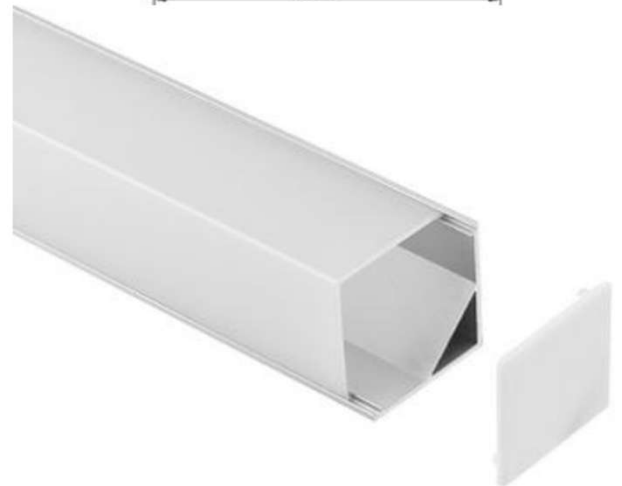
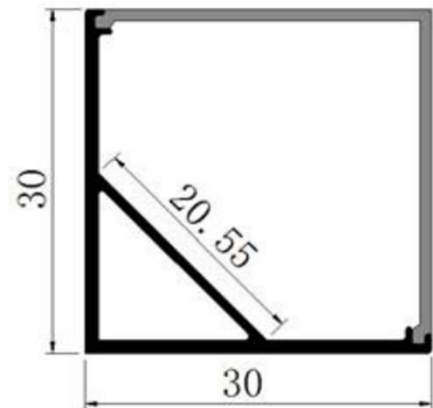
### Specifications

**Material:** Extruded Aluminium

**Aluminium Grade:** 6063 T5 (Aircraft Grade)

**Diffuser:** Opaque Polycarbonate

**Lengths:** 1 m / 2 m / 3m







## PRODUCT DETAILS: PC 16

### Aluminium Profile Channel

This aluminium corner profile is designed to integrate seamlessly onto walls and ceilings, creating a clean, architectural lighting finish. Manufactured from high-quality extruded aluminium and supplied with an opaque polycarbonate diffuser, it allows lighting to be fully embedded for a smooth, flush appearance.

Ideal for both residential and commercial applications, the profile supports creative lighting designs and can be combined with other profiles to form continuous, infinity-style linear light runs.

### Key Features

- Corner mounting aluminium profile for walls and ceilings
- Clean, flush integration for architectural lighting applications
- Suitable for multiple project types and lighting designs
- Joinable sections allow continuous linear or infinity light strips

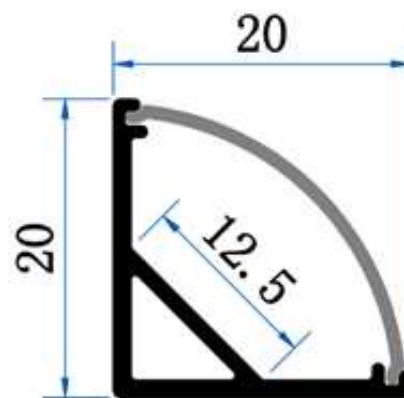
### Specifications

**Material:** Extruded Aluminium

**Aluminium Grade:** 6063 T5 (Aircraft Grade)

**Diffuser:** Opaque Polycarbonate

**Lengths:** 1 m / 2 m / 3m







## PRODUCT DETAILS: PC 17

### Aluminium Profile Channel

This aluminium corner profile is designed to integrate seamlessly onto walls and ceilings, creating a clean, architectural lighting finish. Manufactured from high-quality extruded aluminium and supplied with an opaque polycarbonate diffuser, it allows lighting to be fully embedded for a smooth, flush appearance.

Ideal for both residential and commercial applications, the profile supports creative lighting designs and can be combined with other profiles to form continuous, infinity-style linear light runs.

### Key Features

- Corner mounting aluminium profile for walls and ceilings
- Clean, flush integration for architectural lighting applications
- Suitable for multiple project types and lighting designs
- Joinable sections allow continuous linear or infinity light strips

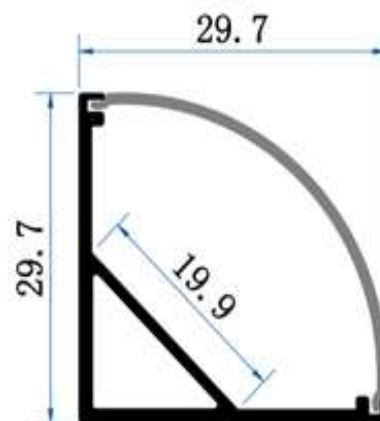
### Specifications

**Material:** Extruded Aluminium

**Aluminium Grade:** 6063 T5 (Aircraft Grade)

**Diffuser:** Opaque Polycarbonate

**Lengths:** 1 m / 2 m / 3m







## PRODUCT DETAILS: PC 18

### Aluminium Profile Channel

This aluminium corner profile is designed to integrate seamlessly onto walls and ceilings, creating a clean, architectural lighting finish. Manufactured from high-quality extruded aluminium and supplied with an opaque polycarbonate diffuser, it allows lighting to be fully embedded for a smooth, flush appearance.

Ideal for both residential and commercial applications, the profile supports creative lighting designs and can be combined with other profiles to form continuous, infinity-style linear light runs.

### Key Features

- Corner mounting aluminium profile for walls and ceilings
- Clean, flush integration for architectural lighting applications
- Suitable for multiple project types and lighting designs
- Joinable sections allow continuous linear or infinity light strips

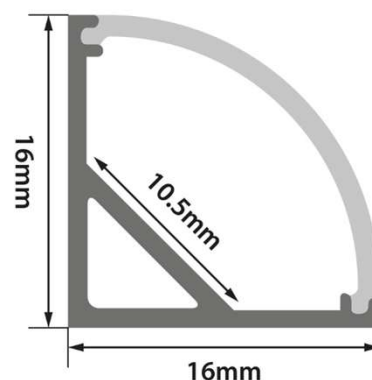
### Specifications

**Material:** Extruded Aluminium

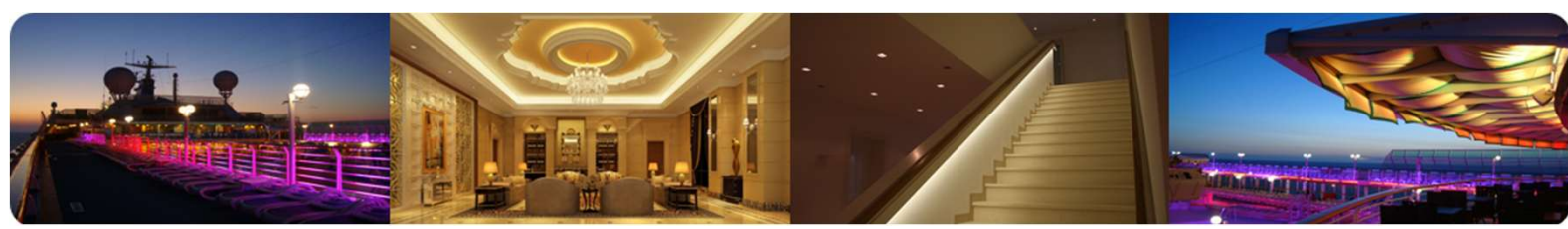
**Aluminium Grade:** 6063 T5 (Aircraft Grade)

**Diffuser:** Opaque Polycarbonate

**Lengths:** 1 m / 2 m / 3m







S P E C I A L P R O J E C T S L T D

# Architectural Profile Solutions Designer

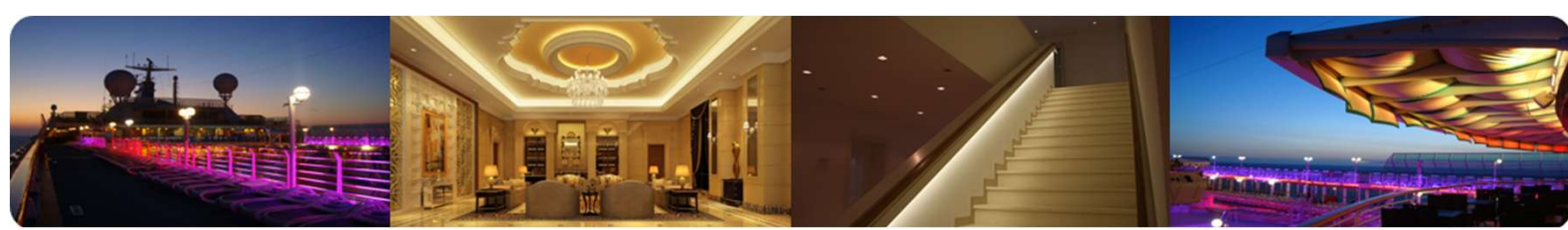


CUSTOM  
ELECTRONIC  
DESIGN &  
INSTALLATION  
ASSOCIATION



British  
Chambers of  
Commerce  
The Ultimate Business Network





## PRODUCT DETAILS: PC 19

### Aluminium Profile Channel

This aluminium profile is designed to integrate seamlessly onto walls and ceilings, creating a clean, architectural lighting finish. Manufactured from high-quality extruded aluminium and supplied with an opaque polycarbonate diffuser, it allows lighting to be fully embedded for a smooth, flush appearance. Ideal for both residential and commercial applications, the profile supports creative lighting designs and can be combined with other profiles to form continuous, infinity-style linear light runs.

### Key Features

- Designer aluminium profile for walls and ceilings
- Clean, flush integration for architectural lighting applications
- Suitable for multiple project types and lighting designs
- Joinable sections allow continuous linear or infinity-style light strips

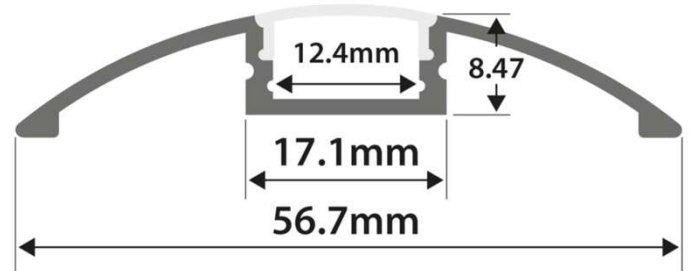
### Specifications

**Material:** Extruded Aluminium

**Aluminium Grade:** 6063 T5 (Aircraft Grade)

**Diffuser:** Opaque Polycarbonate

**Lengths:** 1 m / 2 m / 3m







## PRODUCT DETAILS: PC 20 Cable Suspended

### Aluminium Profile Channel

This aluminium profile is designed to integrate seamlessly onto walls and ceilings, creating a clean, architectural lighting finish.

Manufactured from high-quality extruded aluminium and supplied with an opaque polycarbonate diffuser, it allows lighting to be fully embedded for a smooth, flush appearance.

Ideal for both residential and commercial applications, the profile supports creative lighting designs and can be combined with other profiles to form continuous, infinity-style linear light runs.

### Key Features

- Designer aluminium profile for walls and ceilings
- Clean, flush integration for architectural lighting applications
- Suitable for multiple project types and lighting designs
- Joinable sections allow continuous linear or infinity light strips

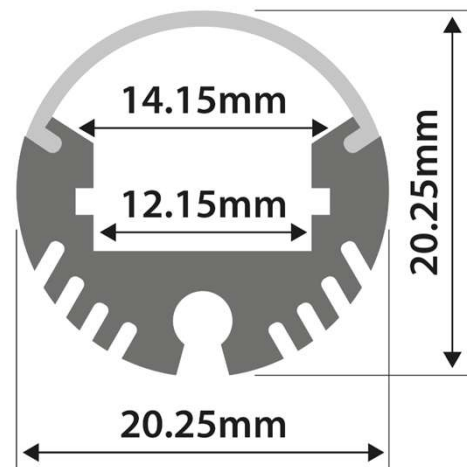
### Specifications

**Material:** Extruded Aluminium

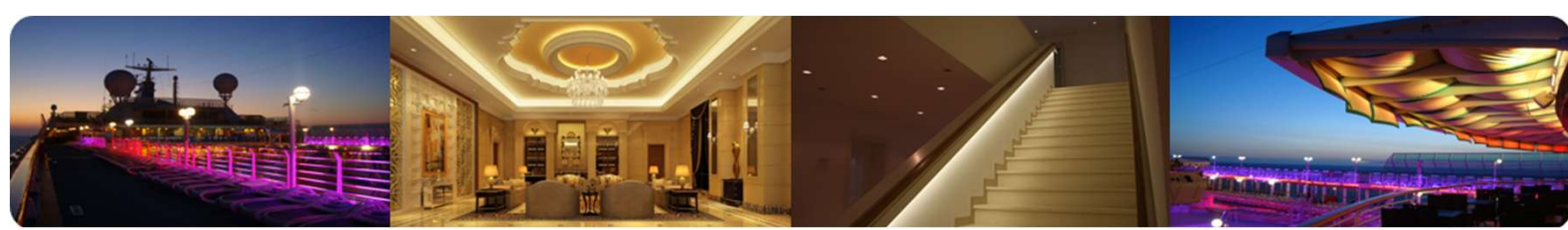
**Aluminium Grade:** 6063 T5 (Aircraft Grade)

**Diffuser:** Opaque Polycarbonate

**Lengths:** 1 m / 2 m / 3m







## PRODUCT DETAILS: PC 21 Bracketed Drop

### Aluminium Profile Channel

This aluminium profile is designed to integrate seamlessly onto walls and ceilings, creating a clean, architectural lighting finish. Manufactured from high-quality extruded aluminium and supplied with an opaque polycarbonate diffuser, it allows lighting to be fully embedded for a smooth, flush appearance. Ideal for both residential and commercial applications, the profile supports creative lighting designs and can be combined with other profiles to form continuous, infinity-style linear light runs.

### Key Features

- Designer aluminium profile for walls and ceilings
- Clean, flush integration for architectural lighting applications
- Suitable for multiple project types and lighting designs
- Joinable sections allow continuous linear or infinity light strips

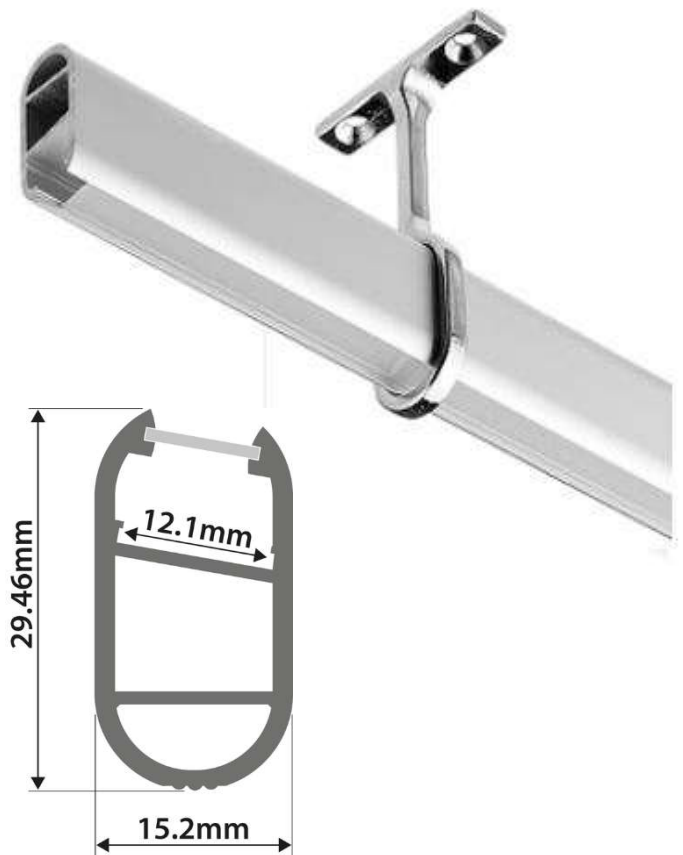
### Specifications

**Material:** Extruded Aluminium

**Aluminium Grade:** 6063 T5 (Aircraft Grade)

**Diffuser:** Opaque Polycarbonate

**Lengths:** 1 m / 2 m / 3m







## PRODUCT DETAILS: PC 22 Up/Down

### Aluminium Profile Channel

This aluminium profile is designed to integrate seamlessly onto walls and ceilings, creating a clean, architectural lighting finish. Manufactured from high-quality extruded aluminium and supplied with an opaque polycarbonate diffuser, it allows lighting to be fully embedded for a smooth, flush appearance. Ideal for both residential and commercial applications, the profile supports creative lighting designs and can be combined with other profiles to form continuous, infinity-style linear light runs.

### Key Features

- Designer aluminium profile for walls and ceilings
- Clean, flush integration for architectural lighting applications
- Suitable for multiple project types and lighting designs
- Joinable sections allow continuous linear or infinity light strips

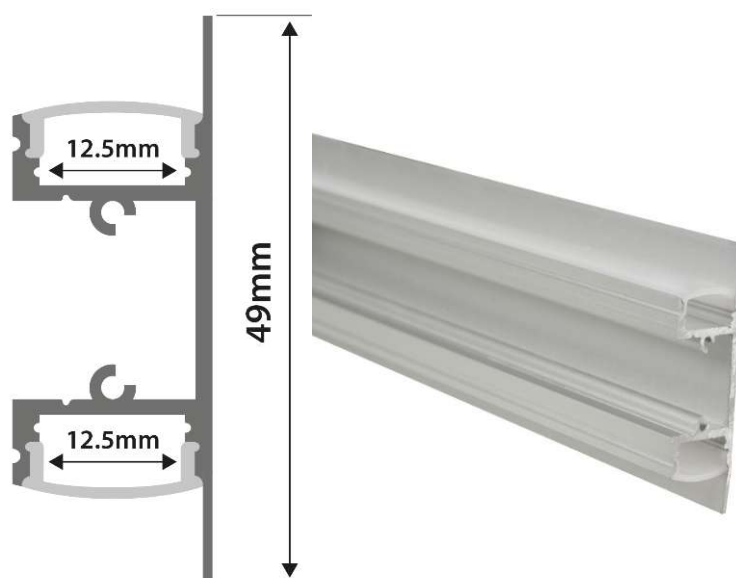
### Specifications

**Material:** Extruded Aluminium

**Aluminium Grade:** 6063 T5 (Aircraft Grade)

**Diffuser:** Opaque Polycarbonate

**Lengths:** 1 m / 2 m / 3m







## PRODUCT DETAILS: PC 23 Step

### Aluminium Profile Channel

This aluminium profile is designed to integrate seamlessly onto walls and ceilings, creating a clean, architectural lighting finish. Manufactured from high-quality extruded aluminium and supplied with an opaque polycarbonate diffuser, it allows lighting to be fully embedded for a smooth, flush appearance. Ideal for both residential and commercial applications, the profile supports creative lighting designs and can be combined with other profiles to form continuous, infinity-style linear light runs.

### Key Features

- Designer aluminium profile for walls and ceilings
- Clean, flush integration for architectural lighting applications
- Suitable for multiple project types and lighting designs
- Joinable sections allow continuous linear or infinity light strips

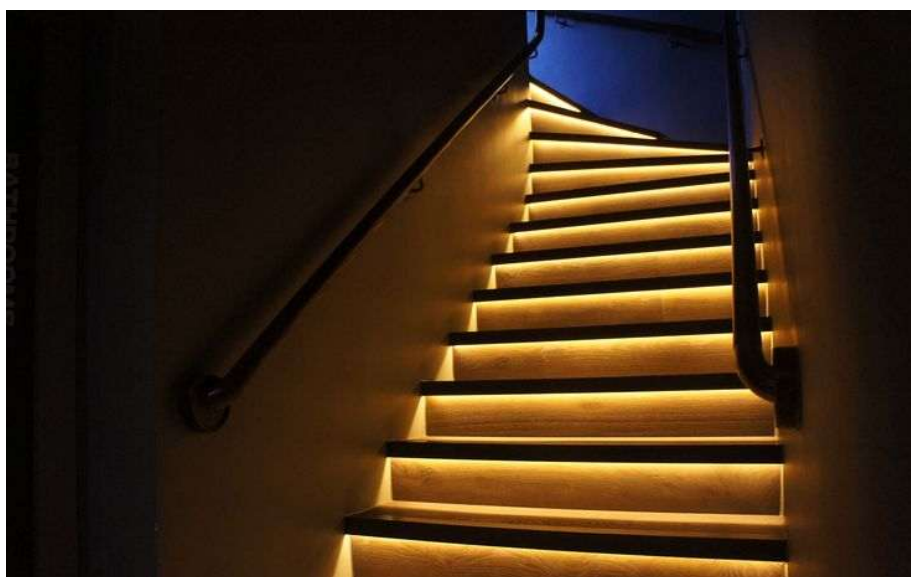
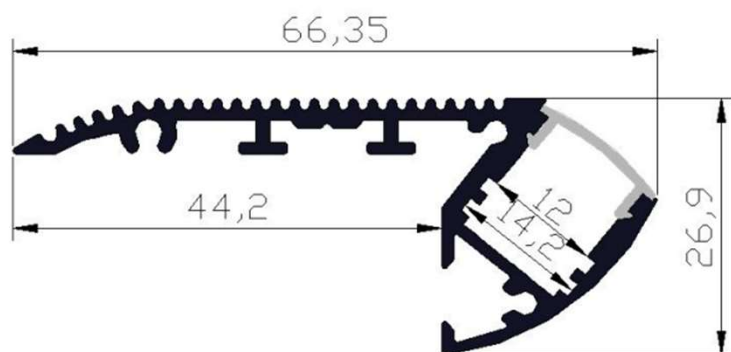
### Specifications

**Material:** Extruded Aluminium

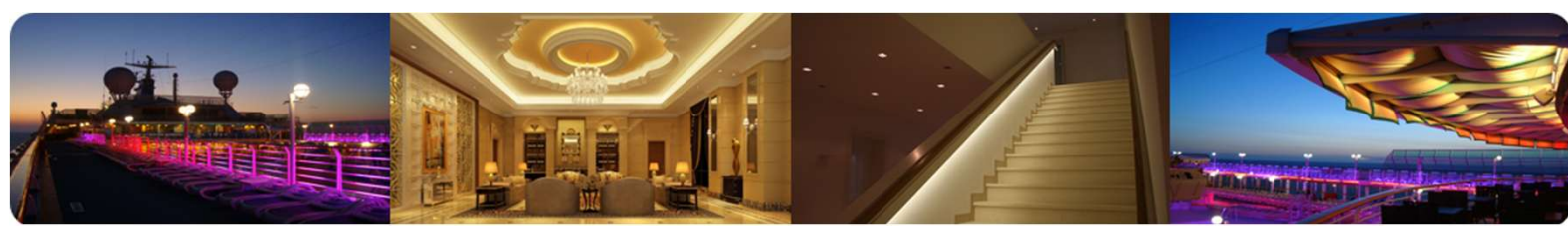
**Aluminium Grade:** 6063 T5 (Aircraft Grade)

**Diffuser:** Opaque Polycarbonate

**Lengths:** 1 m / 2 m / 3m







## PRODUCT DETAILS: PC 24 Cable Suspended

### Aluminium Profile Channel

This aluminium profile is designed to integrate seamlessly onto walls and ceilings, creating a clean, architectural lighting finish.

Manufactured from high-quality extruded aluminium and supplied with an opaque polycarbonate diffuser, it allows lighting to be fully embedded for a smooth, flush appearance.

Ideal for both residential and commercial applications, the profile supports creative lighting designs and can be combined with other profiles to form continuous, infinity-style linear light runs.

### Key Features

- Designer aluminium profile for walls and ceilings
- Clean, flush integration for architectural lighting applications
- Suitable for multiple project types and lighting designs
- Joinable sections allow continuous linear or infinity light strips

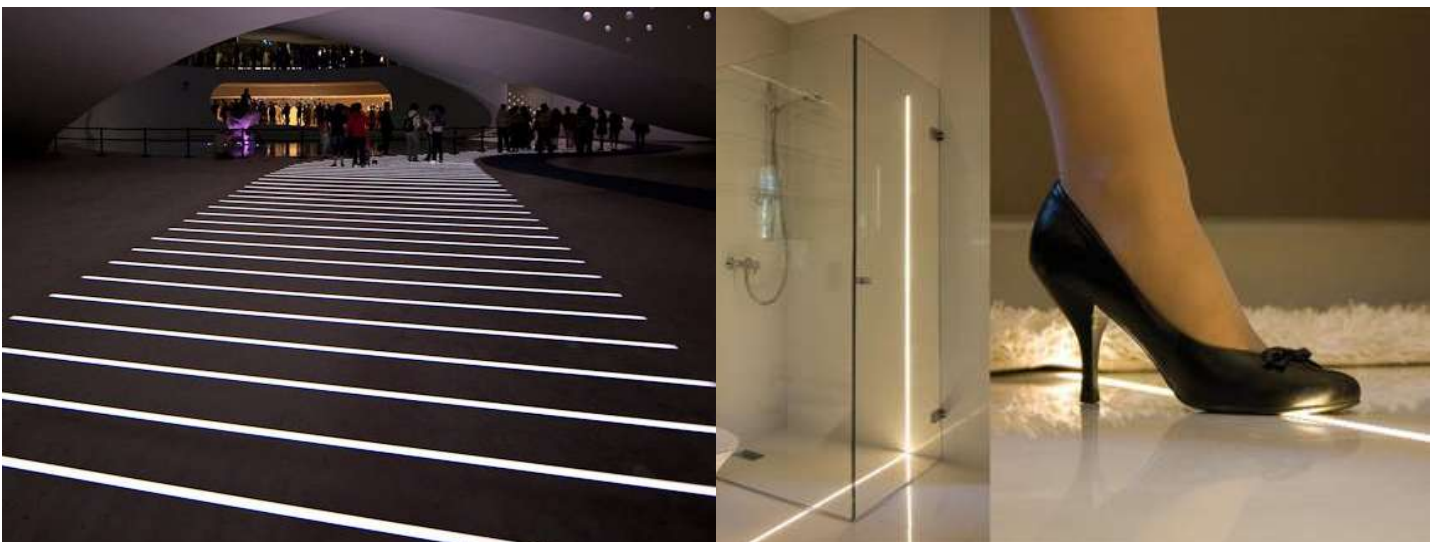
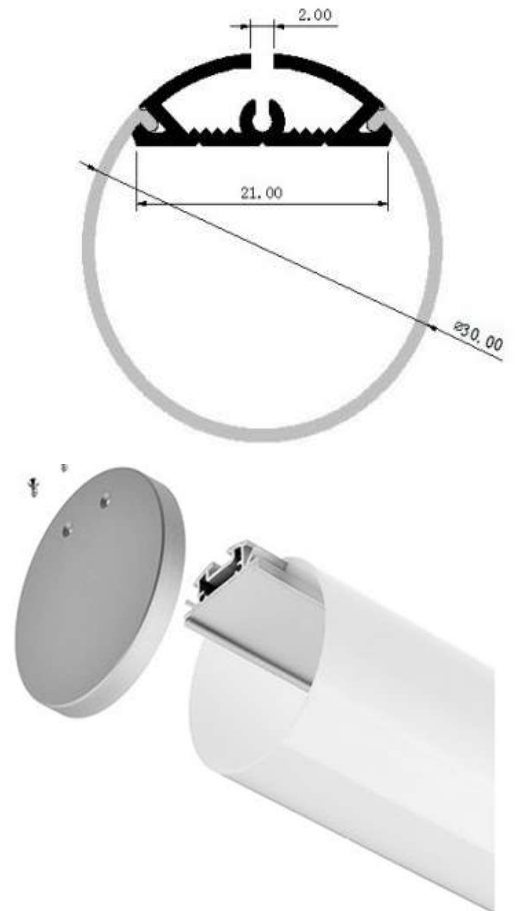
### Specifications

**Material:** Extruded Aluminium

**Aluminium Grade:** 6063 T5 (Aircraft Grade)

**Diffuser:** Opaque Polycarbonate

**Lengths:** 1 m / 2 m / 3m







## PRODUCT DETAILS: PC 25

### Aluminium Profile Channel

This aluminium profile is designed to integrate seamlessly onto walls and ceilings, creating a clean, architectural lighting finish.

Manufactured from high-quality extruded aluminium and supplied with an opaque polycarbonate diffuser, it allows lighting to be fully embedded for a smooth, flush appearance.

Ideal for both residential and commercial applications, the profile supports creative lighting designs and can be combined with other profiles to form continuous, infinity-style linear light runs.

### Key Features

Designer aluminium profile for walls and ceilings

Clean, flush integration for architectural lighting applications

Suitable for multiple project types and lighting designs

Joinable sections allow continuous linear or infinity light strips

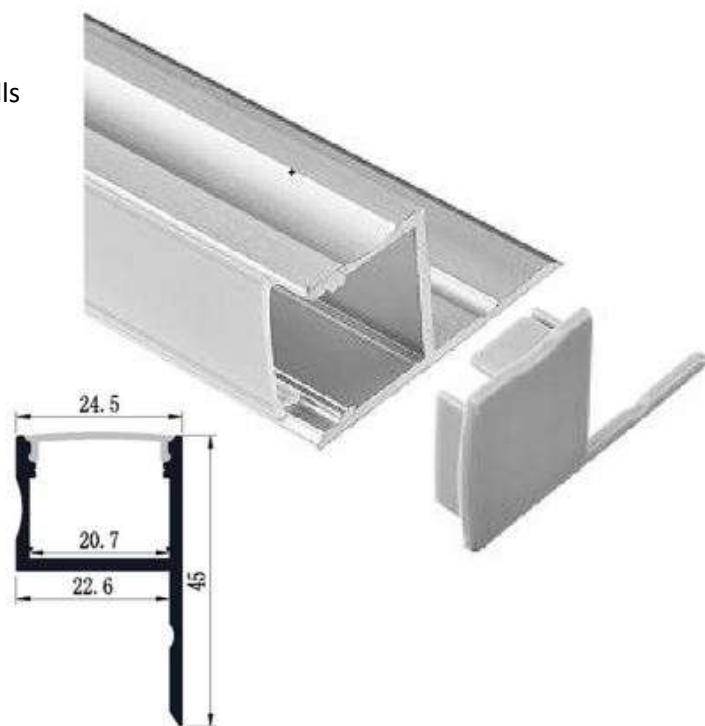
### Specifications

**Material:** Extruded Aluminium

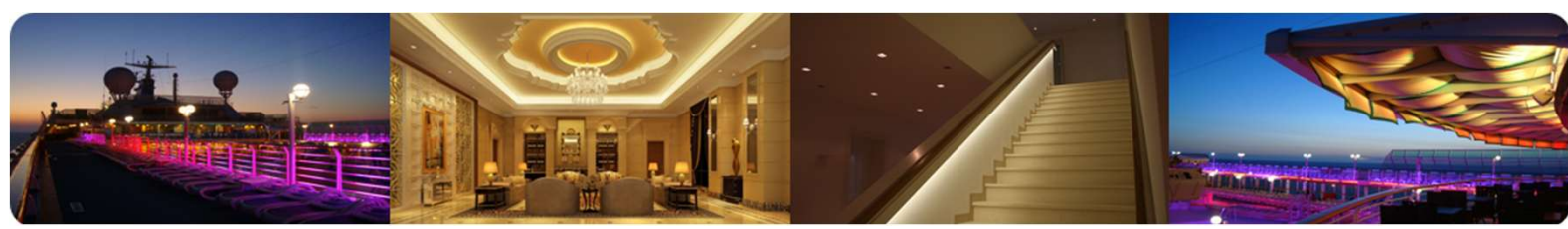
**Aluminium Grade:** 6063 T5 (Aircraft Grade)

**Diffuser:** Opaque Polycarbonate

**Lengths:** 1 m / 2 m / 3m







S P E C I A L P R O J E C T S L T D

# Architectural Profile Solutions

## IP Rated



CUSTOM  
ELECTRONIC  
DESIGN &  
INSTALLATION  
ASSOCIATION



British  
Chambers of  
Commerce  
The Ultimate Business Network





## PRODUCT DETAILS: PC 26

### Aluminium Profile Channel

This aluminium surface mount profile is designed to integrate seamlessly onto walls and ceilings, creating a clean, architectural lighting finish. Manufactured from high-quality extruded aluminium and supplied with an opaque polycarbonate diffuser, it allows lighting to be fully embedded for a smooth, flush appearance.

Ideal for both residential and commercial applications, the profile supports creative lighting designs and can be combined with other profiles to form continuous, infinity-style linear light runs.

### Key Features

- Surface mounting aluminium profile for walls and ceilings
- Clean, flush integration for architectural lighting applications
- Suitable for multiple project types and lighting designs
- Joinable sections allow continuous linear or infinity light strips

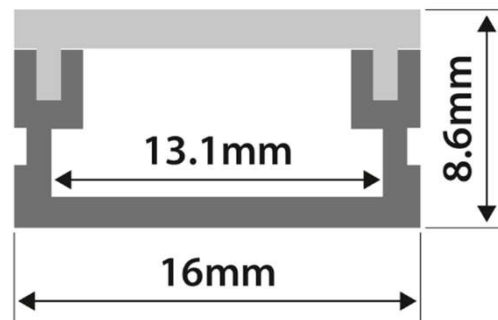
### Specifications

**Material:** Extruded Aluminium

**Aluminium Grade:** 6063 T5 (Aircraft Grade)

**Diffuser:** Opaque Polycarbonate

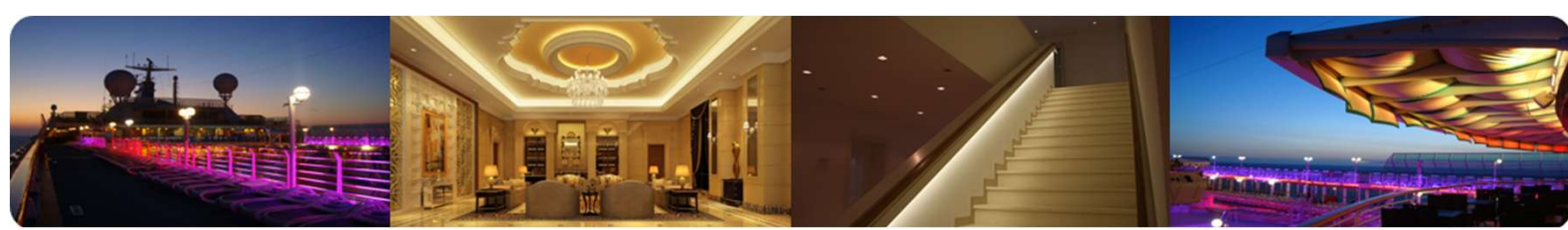
**Lengths:** 1 m / 2 m / 3 m



# IP65







## PRODUCT DETAILS: PC 27

### Aluminium Profile Channel

This aluminium surface mount profile is designed to integrate seamlessly onto walls and ceilings, creating a clean, architectural lighting finish. Manufactured from high-quality extruded aluminium and supplied with an opaque polycarbonate diffuser, it allows lighting to be fully embedded for a smooth, flush appearance.

Ideal for both residential and commercial applications, the profile supports creative lighting designs and can be combined with other profiles to form continuous, infinity-style linear light runs.

### Key Features

- Surface mounting aluminium profile for walls and ceilings
- Clean, flush integration for architectural lighting applications
- Suitable for multiple project types and lighting designs
- Joinable sections allow continuous linear or infinity light strips

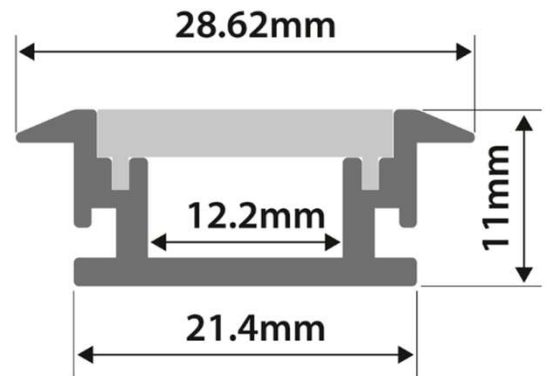
### Specifications

**Material:** Extruded Aluminium

**Aluminium Grade:** 6063 T5 (Aircraft Grade)

**Diffuser:** Opaque Polycarbonate

**Lengths:** 1 m / 2 m / 3 m



# IP65







## DELIVERY INFORMATION:

Small stock levels are maintained within the UK, when orders are taken over our current stock availability the normal fulfilment of that order is approximately 16/20 working days. On orders taken at the beginning and mid CNY holiday (Chinese New Year) we would need to add another 14 working days, this is approximately their holiday duration.

## PRODUCT CHECK:

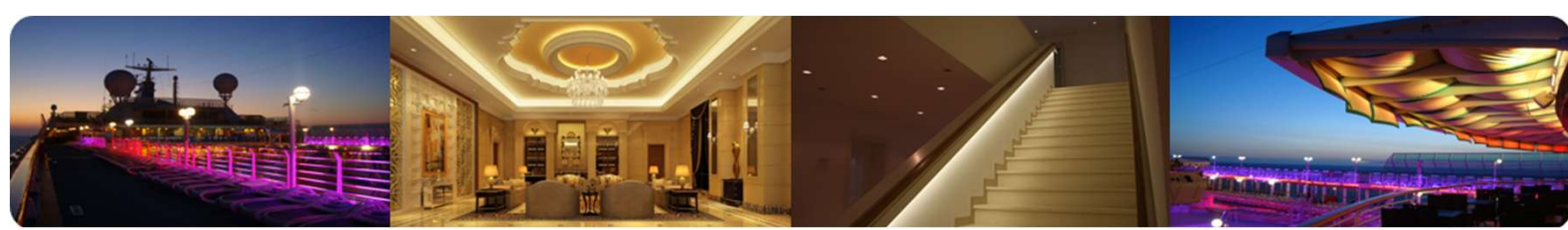
The Customer must inspect the products as soon as is reasonably possible after delivery and shall, within 14 days of the date of delivery. Any defect in the product that is apparent on reasonable examination. In this case GHS shall, at GHS discretion, replace the products or refund the purchase price. In any event the Customer must refuse parcels delivered to it in a damaged condition; any shortfall in products delivered. In this case GHS shall, at its discretion, deliver the undelivered products or refund the price of the undelivered products; any delivery of products not in accordance with the order. In this case GHS shall, at GHS's discretion, replace the products or refund the purchase price; If the Customer fails to give any such notice, the products shall be conclusively presumed to be, in all respects, in accordance with the order and free from apparent defects, and the Customer shall be deemed to have accepted the products accordingly. GHS's record of the products despatched (including the quantity) shall be conclusive evidence of the products received by the Customer, unless proved otherwise by the Customer. The remedies set out above are the Customer's exclusive remedies for non-delivery or short delivery of products, or for apparent defects in the products or delivery of products not in accordance with the order. GHS shall not be liable for any losses, consequential or otherwise, or for costs (including legal costs), expenses, liabilities, injuries, loss of profits, business or economic loss, depletion of goodwill, damages, claims, demands, proceedings, judgments or otherwise arising from these circumstances.

## 5 Year GUARENTEE:

Only provided when products are installed with our LED transient surge protector - SPD-20-240P

All products must be installed as per GHS instructions/guidlines if these instructions/guidlines are not adhered to, all manufactures guarantees will be void. Constant 24/7 usage also not included due to lamp burn out & LEDs installed into enclosed housings/fittings which will cause LED to overheat. (SPECIAL ORDER) Exceptional working conditions for external GHSLED floodlighting: the following working temperatures have been tested under extreme conditions for product use in hot and humid climates for example, such as Middle East (Saudi Arabia, Dubai) Far East Asia (Thailand, India, Singapore): These items can be requested on special order, perimeters: 0~100% humidity (IP67 with additional sealant) - 20°~+60° (both LED COB chip & Meanwell PSU). 2D (standard pads) are provided in 2D bulkhead fittings or on a tray, both of this type are included into the 5 year guarantee when installed by a qualified electrician (power to this product works via switching or PIR systems) no limited switching. For LED products purchased from GHS: GHS warrants that if any product is defective, it will replace or repair the product or refund the purchase price. This warranty is subject to a claim being made in writing to GHS within 5 years of the original date of despatch, or such other longer period as may be indicated by GHS for specific products from time to time in writing. For services purchased from GHS: GHS warrants that if any service is defective, it will, at its option, either re-provide the service or supply to the Customer free of charge a substitute product in place of the defectively serviced product. These warranties shall not apply to any defect which arises from improper use, failure to follow the product instructions, or any repair or modification made without the consent of GHS. The Customer must return or dispose of the products, or make them available for collection by GHS, in accordance with GHS's instructions and suitably packaged. All orders are accepted by GHS subject to the Terms and Conditions of Sale set out below: The Customer must contact GHS to notify GHS of the return of any products prior to returning any products and obtain a returns number, which is to be quoted on all paperwork. Returned products must be accompanied by an advice note stating the original invoice number in respect of the products and the nature of any claimed defect. Where the Customer returns products otherwise than in accordance with these warranty provisions, GHS may refuse such products and return them to the Customer at the cost of the Customer. Any products which are replaced by GHS shall become the property of GHS. Title to replacement products shall pass to the Customer on delivery, and the period of the replacement product's warranty shall be the unexpired period of the defective product's warranty. The remedies set out above shall be GHS's sole liability and the Customer's sole remedy for any breach of warranty and in respect of the supply or non-supply of products and/or services. The Customer shall have no remedy in respect of any untrue statement made to it upon which it relied in ordering products and/or services (unless such untrue statement was made knowing that it was untrue) other than any remedy it may have set out expressly in these terms and conditions of sale. Save as expressly provided in these terms and conditions of sale, all implied warranties, terms and conditions (whether statutory or otherwise) concerning the supply or non-supply of products and/or services are excluded to the fullest extent permitted by law (including, without limitation, the implied terms of satisfactory quality, fitness for purpose and provision of services with reasonable care and skill). GHS will not be liable to the Customer for any loss, damage or liability of any kind whatsoever which arises out of the breach of implied warranties, terms or conditions (statutory or otherwise) or breach of any other duty of any kind imposed on GHS by operation of law. The Customer acknowledges that they are responsible for ensuring that the products ordered are fit for the purposes for which it intends to use them.





## **GHS TERMS & CONDITIONS:**

1. Service calls made outside of the preventive maintenance visits will be billed at normal service rates currently in effect with standard travel charges.
2. Terms of the agreement are void if the equipment is inoperative due to misuse or damage, which is, in our judgment, caused by other than normal use and service.
3. GHS shall not be liable for any fault or delay in performance hereunder caused by any contingency beyond our control such as, but not limited to, short or reduced supply of replacement parts or materials, strikes, unusually severe weather, war, or government restrictions.
4. GHS shall not be liable for any consequential or contingent damage such as loss of use of premises occasioned or arising out of failure of a component part of the equipment covered herein.
5. This agreement shall be void if the equipment, in our judgment, has been subject to misuse, negligence, accident, flood, fire, and lightning, and wind storm, vandalism, tampering, altered in any way or operated contrary to the manufacturer's recommendations. Also, this agreement shall not apply if the electrical components have been subject to voltages other than the range specified by the manufacturer.
6. This agreement does not include external power wiring, circuit breakers and disconnects supplying electrical service for the equipment.
7. This agreement does not cover any work or changes that might at some future date be required by government regulation codes or insurance company needs or requirements.
8. If repair or replacement is needed during the initial inspection, GHS will no longer be responsible for the equipment until after repairs or replacement authorized by the customer are completed. GHS is not responsible for the replacement cost of any equipment and reserves the right to advise the customer when their equipment is obsolete or non-repairable, at which time the contract is terminated until replacement is made. No inspection shall guarantee the condition of the equipment or eliminate obsolescence and normal wear.
9. The occurrence of any of the following without the consent of GHS will constitute default: (a) failure by the customer to make any payments due within thirty (30) days after it becomes due and payable. (b) Any alterations, additions, adjustments or repairs to covered equipment, by anyone other than GHS Special Projects. (c) Breach by the customer of any terms of this agreement.
10. Customer will be notified of any increase in the per visit maintenance charge. Failure to withdraw from the agreement in writing will be considered as acceptance of the new rate and agreement renewal.
11. This agreement will run for a term of twelve (12) months and is automatically renewable yearly but may be terminated by either party at any time upon thirty (30) days written notice.
12. Revisions to this agreement will be applicable to previous agreements. Revisions, changes, or modifications to this agreement thereto are agreed to by both parties upon renewal of agreement.