

S P E C I A L P R O J E C T S L T D

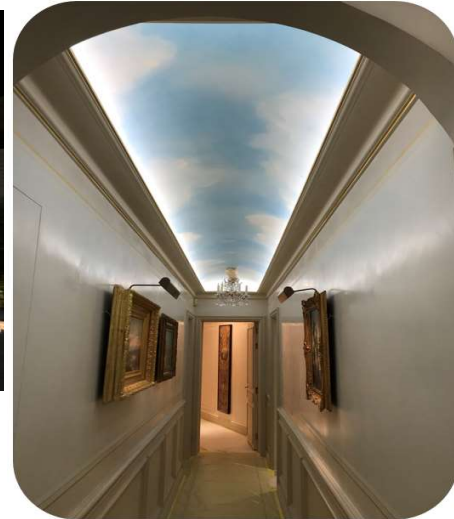
Architectural LED Pro Series Ribbon LED Solutions

RIBBON & PROFILE EXTRUSIONS

Ghs Special Projects Ltd
GHS House
Manchester

+44 0161 737 7333
Email: sales@ghsspecialprojects.com
Website: www.ghsspecialprojects.com





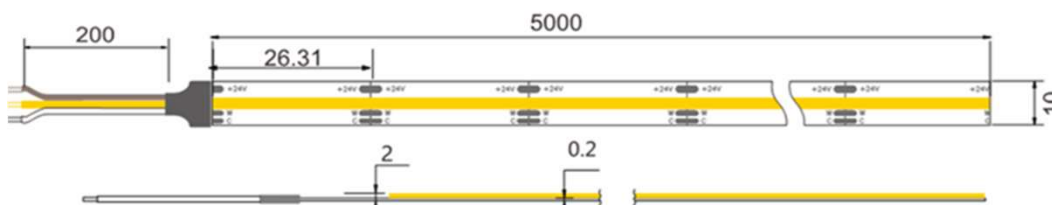
PRO SERIES RIBBON – Seamless Non-Spot

GHSCOB153806

Seamless Ribbon Strip providing the exact colour temperature light required for your project. This seamless LED solution is designed for perfect light integration.

Features: Single colour - 5M Length

- ⚙ Wattage 10Watt
- ⚙ Single board-circuit body Seamless
- ⚙ Installation Adhesive Tape
- ⚙ Cable 2 Core
- ⚙ Lumen per metre 950lm
- ⚙ Cutting points 50mm
- ⚙ Constant Voltage PSU 24Volt
- ⚙ Beam angle 120°
- ⚙ LED Colour 2700K~6000K
- ⚙ IP option IP20
- ⚙ Colour Rendering Index CRI> 80Ra+
- *Bespoke lengths available
- ⚙ CCT: (Kelvin) 2700K/3000K/4000K/5500K/6000K
- Red/green/blue
- ⚙ Dimensions: (custom) L: 5 Metre x 10mm x 2mm



* Average lifetime 30,000 hours
(Lifetime could differ - increase or decrease dependent on environmental and surface installation.)





PRO SERIES RIBBON – Seamless Non-spot

GHSF0603ASAT24

Tunable White Seamless Ribbon Strip offers versatility in providing the exact colour temperature light required for your project. This Dual LED solution is designed for seamless integration, providing dynamic control over colour temperature to suit any mood or setting.

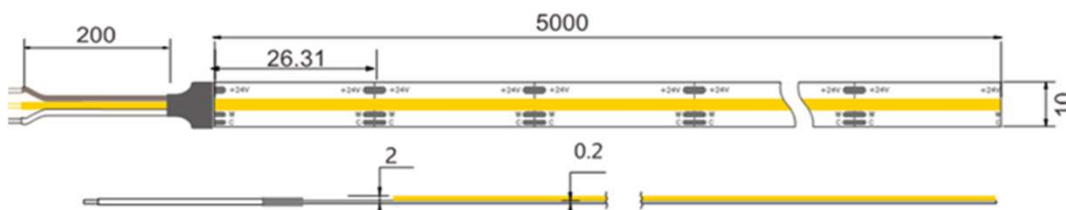
Features: Tunable single colour mix - 5M Length

- ⚙ Single board-circuit body
 - ⚙ Wattage Options PerM 14W - 19W
 - ⚙ cutting points 26mm - 41mm
 - ⚙ Constant Voltage @24Volt
 - ⚙ Lumen per metre 1200lm - 1800lm
 - ⚙ Beam angle 120°
 - ⚙ LED chip 608 - 1008 pcs PerM
 - ⚙ IP option IP20-IP67
 - ⚙ Colour Rendering Index CRI> 90+Ra
 - ⚙ CCT: (Kelvin) 2700K/6500K
 - ⚙ operating temperature: 0 °C ~ 40 °C
 - ⚙ Average lifetime 50,000 hours
 - ⚙ Installation 3M Adhesive
 - ⚙ Dimensions: (mm) 10 X 2 – 12 X 2
- (As standard 5M length – (1~30M single length - Bespoke lengths available)



1200
lm

1800
lm



Ref:

IP20 14W = GHSF0603A304SAT24COBCES

IP67 14W = GHSF0603C304SAT24COBCES

IP20 19W = GHSF0603A504SAT24COB

IP67 19W = GHSF0603C504SA-T-24-COB

MAKING WAVES THROUGH ~ SOUND AND VISION

Ghs Special Projects Ltd, Manchester, +44 0161 737 7333





PRO SERIES RIBBON – Micro LED

GHSF2216TSAH24

Tunable White Ribbon Strip offers versatility in providing the exact colour temperature light required for your project. This Dual LED solution is designed for seamless integration, providing dynamic control over colour temperature to suit any mood or setting.

- ⚙ Single board-circuit body
 - ⚙ Wattage Options PerM 9W
 - ⚙ cutting points 50mm
 - ⚙ Constant Voltage @24Volt
 - ⚙ Lumen per metre 850lm
 - ⚙ Beam angle 120°
 - ⚙ LED chip (2216) 240
 - ⚙ IP option IP20-IP67
 - ⚙ Colour Rendering Index CRI> 95+Ra
 - ⚙ CCT: (Kelvin) 2700K/6500K
 - ⚙ operating temperature: 0 °C ~ 40 °C
 - ⚙ Average lifetime 50,000 hours
 - ⚙ Installation 3M Adhesive
 - ⚙ Dimensions: (mm) 10 X 2 – 12 X 2
- (As standard 5M length – (1~30M single length - Bespoke lengths available)

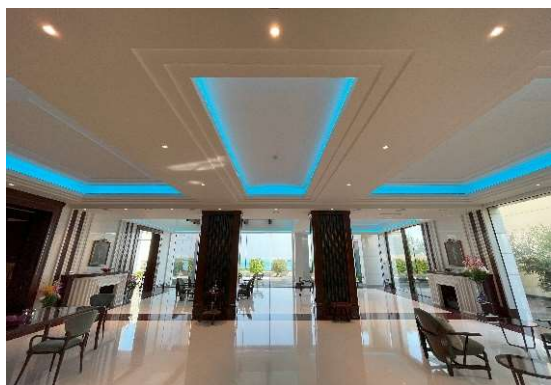


850
lm



Ref: 10W - IP20 = GHSF2216A120TSAH2410 – IP67 = GHSF2216X120TSAH2410





PRO SERIES RIBBON – Micro LED

GHSF2216TSAH24

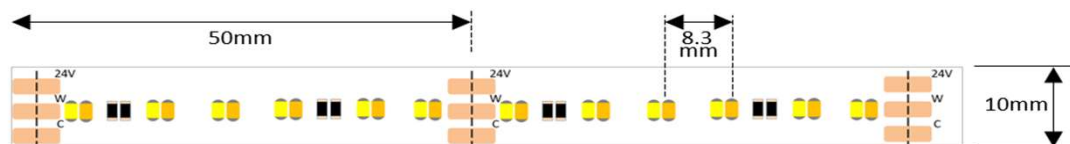
Tunable White Ribbon Strip offers versatility in providing the exact colour temperature light required for your project. This Dual LED solution is designed for seamless integration, providing dynamic control over colour temperature to suit any mood or setting.

- ⚙ Single board-circuit body
 - ⚙ Wattage Options PerM 19.2W - 38.4W
 - ⚙ cutting points 50mm - 25mm
 - ⚙ Constant Voltage @24Volt
 - ⚙ Lumen per metre 1600lm - 3200lm
 - ⚙ Beam angle 120°
 - ⚙ LED chip (2216) 240 - 480 pcs PerM
 - ⚙ IP option IP20-IP67
 - ⚙ Colour Rendering Index CRI> 95+Ra
 - ⚙ CCT: (Kelvin) 2700K/6500K
 - ⚙ operating temperature: 0 °C ~ 40 °C
 - ⚙ Average lifetime 50,000 hours
 - ⚙ Installation 3M Adhesive
 - ⚙ Dimensions: (mm) 10 X 2 – 12 X 2
- (As standard 5M length – (1~30M single length - Bespoke lengths available)

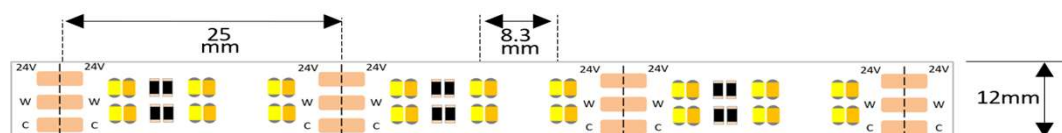


1600
lm

3200
lm



Ref: IP20 = GHSF2216A120TSAH24 – IP67 = GHSF2216X120TSAH24



Ref: IP20 = GHSF2216X120TSAH24



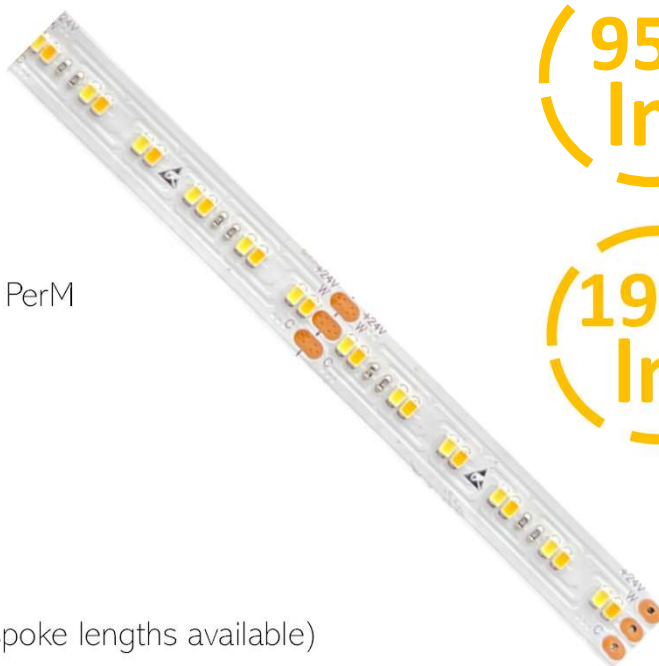


PRO SERIES RIBBON – Micro LED

GHSF2216A60SADTW24

Dim to Warm Ribbon Strip offers perfect dimming from neutral white to very warm white; the colour temperature of the light just dims to a lovely cosy yellow 1800 colour temperature of white perfect for your home or project. This Dual LED solution is designed for seamless integration, providing dynamic control over colour temperature to suit any mood or setting.

- ⚙ Single board-circuit body
 - ⚙ Wattage Options PerM 10W - 20W
 - ⚙ cutting points 100mm - 50mm
 - ⚙ Constant Voltage @24Volt
 - ⚙ Lumen per metre 950lm - 1900lm
 - ⚙ Beam angle 120°
 - ⚙ LED chip (2216) 120 - 240 pcs PerM
 - ⚙ IP option IP20-IP67
 - ⚙ Colour Rendering Index CRI> 95+Ra
 - ⚙ CCT: (Kelvin) 1800K/2800K
 - ⚙ operating temperature: 0 °C ~ 40 °C
 - ⚙ Average lifetime 50,000 hours
 - ⚙ Installation 3M Adhesive
 - ⚙ Dimensions: (mm) 10 X 2 – 12 X 2
- (As standard 5M length – (1~30M single length - Bespoke lengths available)

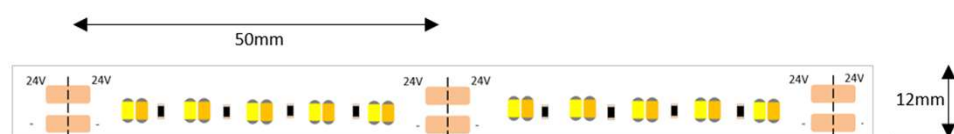


950
lm

1900
lm

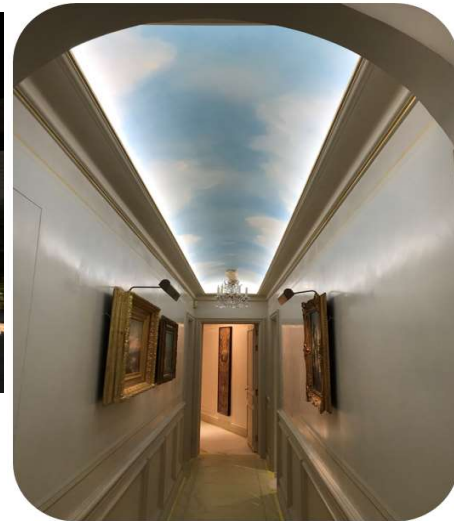


Ref: 10W IP20 = GHSF2216A60SADTW24 – IP67 = GHS F2216C60SADTW24



Ref: 20W IP20 = GHSF2216A120SADTW24 – IP67 = GHS F2216C120SADTW24





PRO SERIES RIBBON – Tunable RGB+WW LED

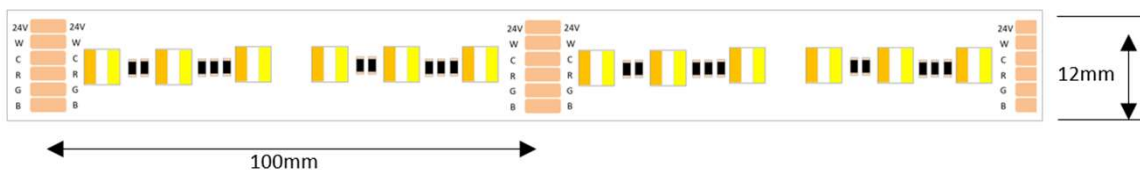
GHSF5050A30WPC24

RGB+WW Ribbon Strip offers great variation of colour mixing and dimming from neutral white to very warm white; the colour temperature of the light adds mood lighting and task lighting from one single strip perfect for your home or project. This LED solution is designed for seamless integration through colours of any choice, providing dynamic control over colour temperature to suit any mood or setting.

- ⚙ Single board-circuit body
- ⚙ Wattage Options PerM 24W
- ⚙ cutting points 6 LEDs/100mm
- ⚙ Constant Voltage @24Volt
- ⚙ Luminous Flux per metre R:120/G:300/B:110/6K:390/27K:330
- ⚙ Beam angle 120°
- ⚙ LED chip (5050) 60 pcs PerM
- ⚙ IP option IP20-IP67
- ⚙ operating temperature: 0 °C ~ 40 °C
- ⚙ Average lifetime 50,000 hours
- ⚙ Installation 3M Adhesive
- ⚙ Colour Rendering Index CRI> 95+Ra
- ⚙ White CCT: (Kelvin) 2500K/6000K



- ⚙ Dimensions: (mm) 12 X 2
- (As standard 5M length – (1~30M single length - Bespoke lengths available)



Ref: IP20 = GHSF5050A30WPC24IP20

Ref: IP67 = GHSF5050A30WPC24IP67



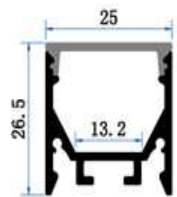
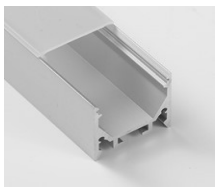
LED Profile Extrusion

LED Profile extrusions

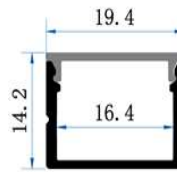
This is our high grade professional durable solution for installing LED ribbon. Each extrusion is made of T5 aircraft aluminium which enhances thermal performance and protects the ribbon from heat that is produced when the LED is at its brightest level, the included diffuser reduces the visibility of direct eye contact to the bare LED and minimizes any discomfort and LED spotting on reflective surfaces.

- ⚙ 2 Metre Lengths
- ⚙ Supplied with clips & end caps where applicable
- ⚙ Frosted diffuser

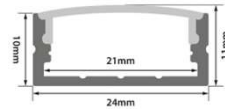
PE1 Surface Mount



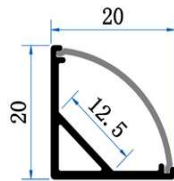
PE2 Surface Mount



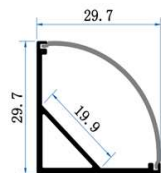
PE3 Surface Mount



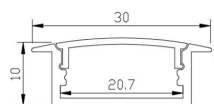
PE4 Corner Mount



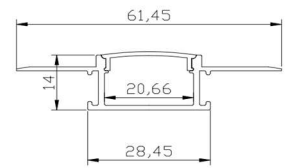
PE5 Corner Mount



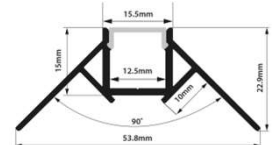
PE6 Recessed



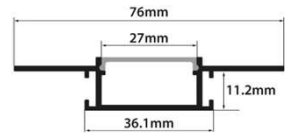
PE7 Plaster In



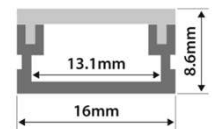
PE8 Corner Plaster In



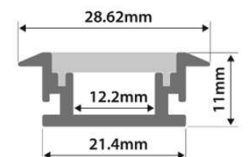
PE9 Plaster In



PE10 Waterproof Surface Mount



PE11 Waterproof Recessed



PE12 Surface Mount

